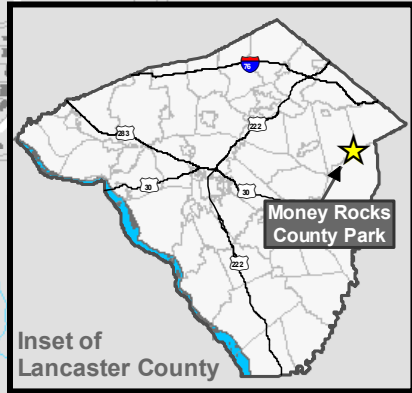


Money Rocks County Park



Money Rocks Park

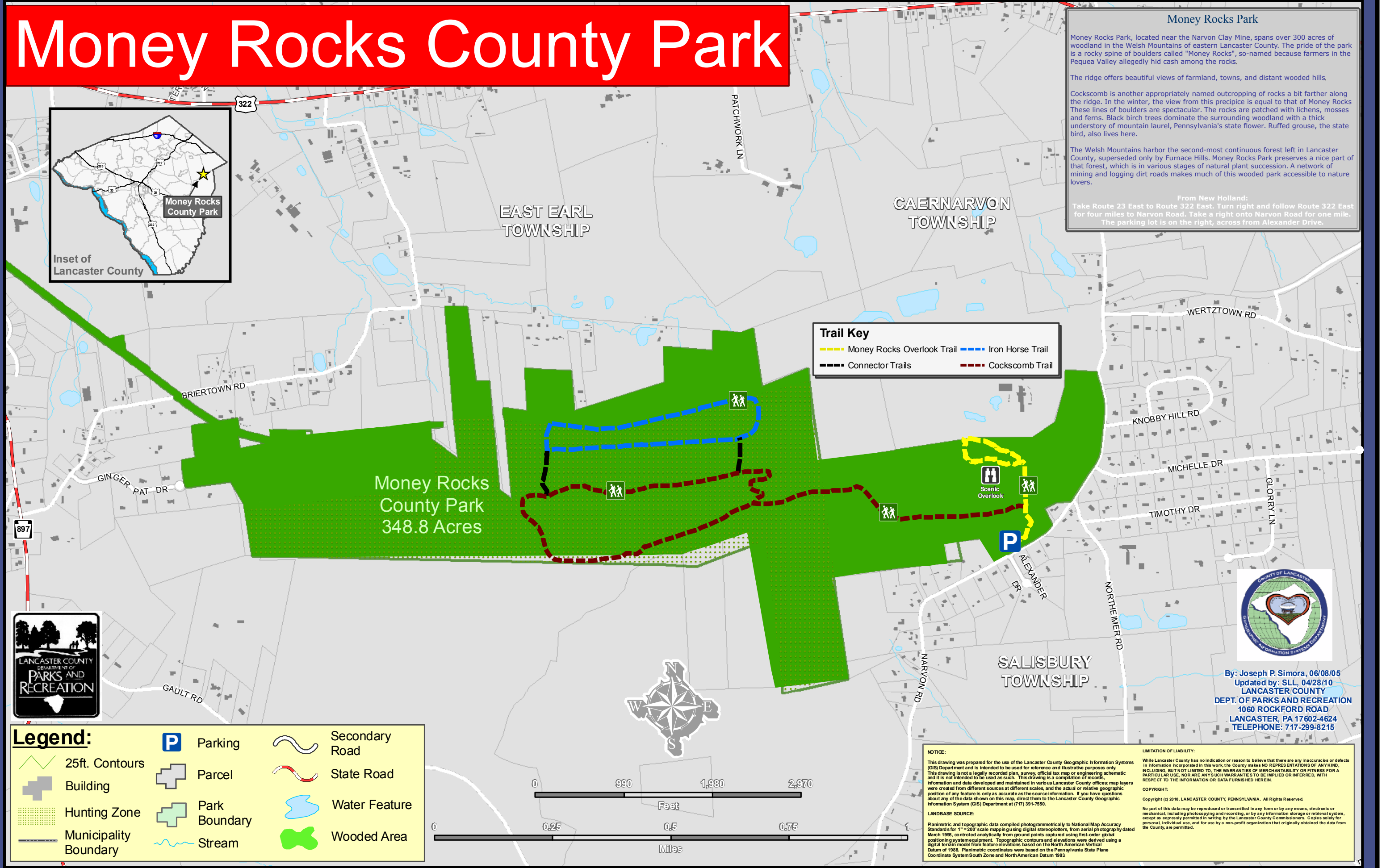
Money Rocks Park, located near the Narvon Clay Mine, spans over 300 acres of woodland in the Welsh Mountains of eastern Lancaster County. The pride of the park is a rocky spine of boulders called "Money Rocks", so-named because farmers in the Pequea Valley allegedly hid cash among the rocks.

The ridge offers beautiful views of farmland, towns, and distant wooded hills.

Cockscomb is another appropriately named outcropping of rocks a bit farther along the ridge. In the winter, the view from this precipice is equal to that of Money Rocks. These lines of boulders are spectacular. The rocks are patched with lichens, mosses and ferns. Black birch trees dominate the surrounding woodland with a thick understory of mountain laurel, Pennsylvania's state flower. Ruffed grouse, the state bird, also lives here.

The Welsh Mountains harbor the second-most continuous forest left in Lancaster County, superseded only by Furnace Hills. Money Rocks Park preserves a nice part of that forest, which is in various stages of natural plant succession. A network of mining and logging dirt roads makes much of this wooded park accessible to nature lovers.

From New Holland:
Take Route 23 East to Route 322 East. Turn right and follow Route 322 East for four miles to Narvon Road. Take a right onto Narvon Road for one mile. The parking lot is on the right, across from Alexander Drive.



Trail Key

- Money Rocks Overlook Trail
- Iron Horse Trail
- Connector Trails
- Cockscomb Trail

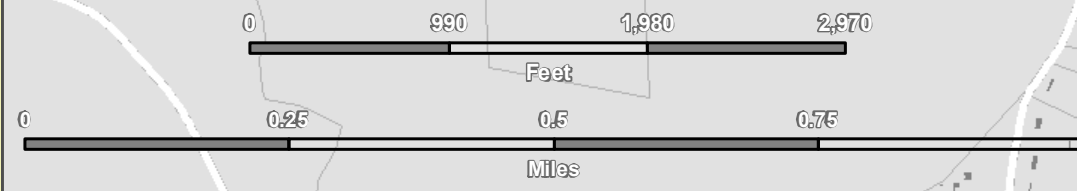
Money Rocks County Park
348.8 Acres



By: Joseph P. Simora, 06/08/05
Updated by: SLL, 04/28/10
LANCASTER COUNTY
DEPT. OF PARKS AND RECREATION
1060 ROCKFORD ROAD
LANCASTER, PA 17602-4624
TELEPHONE: 717-299-8215

Legend:

- 25ft. Contours
- Building
- Hunting Zone
- Municipality Boundary
- Parking
- Parcel
- Park Boundary
- Stream
- Secondary Road
- State Road
- Water Feature
- Wooded Area



NOTICE:
This drawing was prepared for the use of the Lancaster County Geographic Information Systems (GIS) Department and is intended to be used for reference and illustrative purposes only. This drawing is not a legally recorded plan, survey, official tax map or engineering schematic and it is not intended to be used as such. This drawing is a compilation of records, information and data developed and maintained in various Lancaster County offices; map layers were created from different sources at different scales, and the actual or relative geographic position of any feature is only as accurate as the source information. If you have questions about any of the data shown on this map, direct them to the Lancaster County Geographic Information System (GIS) Department at (717) 391-7950.

LANDBASE SOURCE:
Planimetric and topographic data compiled photogrammetrically to National Map Accuracy Standards for 1" = 200' scale mapping using digital stereoplotters, from aerial photography dated March 1996, controlled analytically from ground points captured using first-order global positioning system equipment. Topographic contours and elevations were derived using a digital terrain model from feature elevations based on the North American Vertical Datum of 1985. Planimetric coordinates were based on the Pennsylvania State Plane Coordinate System South Zone and North American Datum 1983.

LIMITATION OF LIABILITY:
While Lancaster County has no indication or reason to believe that there are any inaccuracies or defects in information incorporated in this work, the County makes NO REPRESENTATIONS OF ANY KIND, INCLUDING, BUT NOT LIMITED TO, THE WARRANTIES OF MERCHANTABILITY OR FITNESS FOR A PARTICULAR USE, NOR ARE ANY SUCH WARRANTIES TO BE IMPLIED OR INFERRED, WITH RESPECT TO THE INFORMATION OR DATA FURNISHED HEREIN.

COPYRIGHT:
Copyright (c) 2010, LANCASTER COUNTY, PENNSYLVANIA. All Rights Reserved.

No part of this data may be reproduced or transmitted in any form or by any means, electronic or mechanical, including photocopying and recording, or by any information storage or retrieval system, except as expressly permitted in writing by the Lancaster County Commissioners. Copies solely for personal, individual use, and for use by a non-profit organization that originally obtained the data from the County, are permitted.