

LANCASTER COUNTY COMMISSIONERS' WORK SESSION AGENDA

TUESDAY, APRIL 7, 2026

10:00 a.m. – Conference Room #701, 7th Floor

The Work Session is being video recorded for public viewing and is available on the County's website.

1. Executive Session Announcement:

2. Minutes As Distributed: Postpone approval of the March 31, 2026 Work Session Minutes.

3. Reannouncement: An Evening Commissioners' Meeting is scheduled for Wednesday, April 8, 2026 at 7:00 p.m. at the East Cocalico Township Municipal Building, 100 Hill Road, Denver, PA. There is no Commissioners' Meeting scheduled for Wednesday, April 8, 2026 at 9:15 a.m.

4. Public Session:

a. 10:00 a.m. Proclamation – Child Abuse Prevention Month

Crystal Natan, Executive Director, Children and Youth Agency

Leonard G. Brown III, President Judge

Heather Adams, District Attorney

b. 10:10 a.m. Drug and Alcohol Commission – New and Renewal Contracts

Nicole Snyder, Acting Director

c. 10:20 a.m. Planning Department – Agreement with Kittelson & Associates

Will Clark, Executive Director

d. 10:30 a.m. General Services –

Bob Devonshire, Director

Carmen Simone, Deputy Director

Agreement with George Ely Associates, Inc.

Addendum with RETTEW Associates

5. Other Discussion Items

1. April 8, 2026 Evening Commissioners' Meeting Agenda

6. Business from Guests

7. Adjourn



County of Lancaster

Office of the Commissioners

County Commissioners

Ray D'Agostino, Chairman
Joshua G. Parsons, Vice-Chairman
Alice Yoder, Commissioner

PROCLAMATION

Child Abuse Prevention Month

April 7, 2026

WHEREAS, Lancaster County strives to ensure every child in our County can have a healthy and safe upbringing by working together to prevent child abuse; and

WHEREAS, Lancaster County Children and Youth serve over 7,000 children and 5,000 families annually. In 2025, Lancaster County Children and Youth investigated over 1,630 cases of suspected abuse. Child abuse is a tragedy for our children and a tragedy for our County. When children can grow and develop in a caring and nurturing home environment, they are much more likely to have brighter futures, and make a positive impact in their community; and

WHEREAS, We must work collaboratively to protect the children of Lancaster County. We applaud Lancaster County's law enforcement community, Lancaster County Children and Youth Agency and other public services, as well as the countless community organizations, schools, businesses and concerned citizens who are joining forces in this endeavor; and

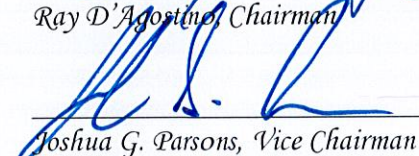
WHEREAS, Effective child abuse prevention programs succeed because of partnerships created between families, law enforcement, the courts, social service agencies, schools, religious organizations, and the business community, who work hard to nurture and support the victims of child abuse and prevent future abuse; and

WHEREAS, All citizens should become more aware of child abuse and work to prevent it within Lancaster County and beyond.

NOW, THEREFORE, WE, THE BOARD OF COMMISSIONERS OF LANCASTER COUNTY, PENNSYLVANIA Do hereby proclaim April 2026 as "Child Abuse Prevention Month" in Lancaster County and call upon all citizens to increase their participation in efforts to prevent child abuse, thereby strengthening the community in which we live.




Ray D'Agostino, Chairman


Joshua G. Parsons, Vice Chairman


Alice Yoder, Commissioner

Board of Commissioners
Lancaster County, Pennsylvania

On motion of Commissioner _____, seconded by Commissioner _____, it was agreed for the County of Lancaster, acting on behalf of the Drug and Alcohol Commission, to approve the following:

<u>Renewal</u> <u>Agreements With:</u>	<u>For:</u>	<u>Amounts</u> <u>Fiscal Year</u> <u>January 1 - June 30, 2026</u>	<u>Percent</u> <u>Increase/</u> <u>Decrease</u>
Advanced Treatment Systems Coatesville, PA Lebanon, PA	Provide Methadone Maintenance	\$15.00/Day	
ARS of Ephrata Ephrata, PA	Methadone	\$15.00/Day	
	Assessments & Evaluations	\$80.00/Hour	
	Clinical Consultation/Training	\$40.00/Hour	
	Screening	No Charge	
	Transportation	At Cost	
	<u>Outpatient:</u>		
	Individual	\$74.00/Hour	
	Group	\$34.00/Hour	
	<u>Intensive Outpatient:</u>		
	Individual	\$74.00/Hour	
	Group	\$34.00/Hour	
	Total Contract Cap:	\$2,000.00	-200%
ARS of Lancaster Lancaster, PA	Methadone	\$15.00/Day	
	Assessments & Evaluations	\$80.00/Hour	
	Clinical Consultation/Training	\$40.00/Hour	
	Screening	No Charge	
	Transportation	At Cost	
	<u>Outpatient:</u>		
	Individual	\$74.00/Hour	
	Group	\$34.00/Hour	
	<u>Intensive Outpatient:</u>		
	Individual	\$74.00/Hour	
	Group	\$34.00/Hour	
	Total Contract Cap:	\$2,000.00	-200%

<u>Renewal</u> <u>Agreements With:</u>	<u>For:</u>	<u>Amounts</u> <u>Fiscal Year</u> <u>January 1 - June 30, 2026</u>	<u>Percent</u> <u>Increase/</u> <u>Decrease</u>
ASCEND Clinical Services Rehrersburg, PA	3.7 Withdrawal Management	\$354.00/Day	
	3.5 Rehab	\$205.00/Day	
	Case Management Services	\$40.00/Hour	
	Medication Assisted Treatment	At Cost	
Avenues Recovery Medical Center at Norristown, PA	4.0 Withdrawal Management/		
	4.0 Rehab	\$589.37/Day	
	3.7 Withdrawal Management	\$550.00/Day	+9.09%
	3.5 Rehab	\$471.00/Day	+8.92%
	3.7 Rehab	\$544.00/Day	+9.01%
	Case Management Services	\$40.00/Hour	
Blueprints for Addiction Recovery Lancaster, PA	Medication Assisted Treatment	At Cost	
	Assessments & Evaluations	\$80.00/Hour	
	Clinical Consultation/Training	\$40.00/Hour	
	Screening	No Charge	
	Transportation	At Cost	
	Two Case Manager Positions	\$73,600.00	-350%
	4 Recovery Support Positions	\$125,120.00	-125%
	Pathways to Recovery (Opioid Settlement Grant)	\$84,000.00	-267.18%
	<u>Outpatient:</u>		
	Individual	\$74.00/Hour	
	Group	\$34.00/Hour	
	<u>Intensive Outpatient:</u>		
	Individual	\$74.00/Hour	
	Group	\$34.00/Hour	
	<u>Partial:</u>		
	Individual	\$66.00/Hour	
	Group	\$26.00/Hour	
<u>Adolescent Outpatient:</u>			
Individual	\$76.00/Hour		
Group	\$32.00/Hour		
Total Contract Cap:	\$407,720.00	-217.9%	

-Continued-

<u>Renewal</u> <u>Agreements With:</u>	<u>For:</u>	<u>Amounts</u> <u>Fiscal Year</u> <u>January 1 - June 30, 2026</u>	<u>Percent</u> <u>Increase/</u> <u>Decrease</u>
BGI of Brandywine, LLC dba Bowling Green Brandywine Kennett Square, PA	3.7 Withdrawal Management	\$446.00/Day	
	3.5 Rehab	\$353.00/Day	
	3.5 Rehab Enhanced	\$337.00/Day	
	Case Management Services	\$40.00/Hour	
	Medication Assisted Treatment	At Cost	
Catholic Charities, Saint Samuels Center/ Evergreen House Harrisburg, PA	3.1 Halfway House	\$143.00/Day	
	Case Management Services	\$40.00/Hour	
	Medication Assisted Treatment	At Cost	
Community Care & Addiction Recovery Services (CCARS) Leola, PA	Assessments & Evaluations	\$80.00/Hour	
	Clinical Consultation/Training	\$40.00/Hour	
	Screening	No Charge	
	Transportation	At Cost	
	Case Manager Position	\$36,800.00	-200%
	<u>Outpatient:</u>		
	Individual	\$74.00/Hour	
	Group	\$34.00/Hour	
	<u>Intensive Outpatient:</u>		
	Individual	\$74.00/Hour	
	Group	\$34.00/Hour	
	<u>Adolescent Outpatient:</u>		
	Individual	\$76.00/Hour	
	Group	\$32.00/Hour	
Total Contract Cap:	\$76,800.00	-196.09%	
Clearbrook Treatment Center, LLC/Huntington Shickshinny, PA	3.7 Withdrawal Management	\$579.00/Day	
	3.5 Rehab	\$472.00/Day	
	Case Management Services	\$40.00/Hour	
	Medication Assisted Treatment	At Cost	
DARS Inc. Manos House Columbia, PA	3.5 Rehab	\$208.00/Day	
	Case Management Services	\$40.00/Hour	
	Medication Assisted Treatment	At Cost	

-Continued-

<u>Renewal</u> <u>Agreements With:</u>	<u>For:</u>	<u>Amounts</u> <u>Fiscal Year</u> <u>January 1 - June 30, 2026</u>	<u>Percent</u> <u>Increase/</u> <u>Decrease</u>
Daystar Center for Manos House Columbia, PA	3.1 Halfway House Case Management Services Medication Assisted Treatment	\$186.00/Day \$40.00/Hour At Cost	
Eagleville Hospital Eagleville, PA	4.0 Withdrawal Management/ 4.0 Rehab 3.7 Withdrawal Management 3.5 Rehab 3.5 Rehab Enhanced 3.7 Rehab 3.7 Rehab Enhanced Case Management Services Medication Assisted Treatment	\$525.81/Day \$550.00/Day \$454.00/Day \$469.00/Day \$524.00/Day \$540.00/Day \$40.00/Hour At Cost	
Firetree (Conewago Place) Hummelstown, PA	3.5 Rehab	\$255.00/Day	
Firetree Conewago Pottsville Pottsville, PA	3.5 Rehab Case Management Services Medication Assisted Treatment	\$275.00/Day \$40.00/Hour At Cost	
H.E.A.R, Inc./ Gate House for Men Lititz	3.1 Halfway House Case Management Services Medication Assisted Treatment	\$231.00/Day \$40.00/Hour At Cost	
H.E.A.R, Inc./ Gate House for Men Mountville	3.1 Halfway House Case Management Services Medication Assisted Treatment	\$240.00/Day \$40.00/Hour At Cost	
H.E.A.R, Inc./ Gate House for Women Marietta	3.1 Halfway House Case Management Services Medication Assisted Treatment	\$260.00/Day \$40.00/Hour At Cost	+5.77%

-Continued-

<u>Renewal</u> <u>Agreements With:</u>	<u>For:</u>	<u>Amounts</u> <u>Fiscal Year</u> <u>January 1 - June 30, 2026</u>	<u>Percent</u> <u>Increase/</u> <u>Decrease</u>
Gate House Behavioral Health Services Lancaster, PA	Assessments & Evaluations	\$80.00/Hour	
	Clinical Consultation/Training	\$40.00/Hour	
	Screening	No Charge	
	Transportation	At Cost	
	Two Case Manager Positions	\$73,600.00	-150%
	Medication Assisted Treatment	At Cost	
	SOR Case Management & Recovery Housing Grant	\$150,000.00	-189.16%
	<u>Outpatient:</u>		
	Individual	\$74.00/Hour	
	Group	\$34.00/Hour	
	<u>Intensive Outpatient:</u>		
	Individual	\$74.00/Hour	
	Group	\$34.00/Hour	
	<u>Partial:</u>		
	Individual	\$66.00/Hour	
	Group	\$26.00/Hour	
<u>Adolescent Outpatient:</u>			
Individual	\$76.00/Hour		
Group	\$32.00/Hour		
Total Contract Cap:	\$243,600.00	-178.22%	
Gaudenzia, Inc. Common Ground Harrisburg, PA	3.7 Withdrawal Management	\$330.00/Day	+16.67%
	3.5 Rehab	\$233.00/Day	+16.74%
	3.7 Rehab	\$344.00/Day	New
	Case Management Services	\$40.00/Hour	
	Medication Assisted Treatment	At Cost	
Gaudenzia, Inc. Fountain Springs	3.5 Rehab	\$336.00/Day	+12.80%
	Case Management Services	\$40.00/Hour	
	Medication Assisted Treatment	At Cost	
Gaudenzia, Inc. Vantage House	3.5 Rehab	\$400.00/Day	+12.50%
	3.7 Rehab	\$450.00/Day	New
	Case Management Services	\$40.00/Hour	
	Medication Assisted Treatment	At Cost	

-Continued-

<u>Renewal</u> <u>Agreements With:</u>	<u>For:</u>	<u>Amounts</u> <u>Fiscal Year</u> <u>January 1 - June 30, 2026</u>	<u>Percent</u> <u>Increase/</u> <u>Decrease</u>
Gaudenzia, Inc. House of Healing	3.5 Rehab Case Management Services Medication Assisted Treatment	\$400.00/Day \$40.00/Hour At Cost	+16.74%
Good Friends Morrisville, PA	3.1 Halfway House Case Management Services Medication Assisted Treatment	\$173.00/Day \$40.00/Hour At Cost	+2.31%
Liberate, Inc. Bensalem, PA	3.1 Halfway House 3.5 Rehab Case Management Services Medication Assisted Treatment	\$251.00/Day \$339.00/Day \$40.00/Hour At Cost	
Malvern Treatment Center Malvern, PA	3.7 Withdrawal Management 3.5 Rehab 3.5 Rehab Enhanced 3.7 Rehab Case Management Services Medication Assisted Treatment	\$402.00/Day \$383.00/Day \$399.00/Day \$389.00/Day \$40.00/Hour At Cost	
Malvern Treatment Center Willow Grove, PA	3.7 Withdrawal Management 3.5 Rehab 3.5 Rehab Enhanced 3.7 Rehab Case Management Services Medication Assisted Treatment	\$415.00/Day \$385.00/Day \$388.00/Day \$425.00/Day \$40.00/Hour At Cost	New
Malvern Treatment Center Malvern, PA	3.7 Withdrawal Management 3.5 Rehab 3.7 Rehab Enhanced Case Management Services Medication Assisted Treatment	\$474.00/Day \$415.00/Day \$606.00/Day \$40.00/Hour At Cost	New New New

-Continued-

<u>Renewal</u> <u>Agreements With:</u>	<u>For:</u>	<u>Amounts</u> <u>Fiscal Year</u> <u>January 1 - June 30, 2026</u>	<u>Percent</u> <u>Increase/</u> <u>Decrease</u>
Naaman Center Elizabethtown, PA	Assessments & Evaluations	\$80.00/Hour	
	Clinical Consultation/Training	\$40.00/Hour	
	Screening	No Charge	
	Transportation	At Cost	
	Three Case Manager Positions	\$110,400.00	-200%
	Medication Assisted Treatment	At Cost	
	Recovery Housing Start Up Grant	\$50,000.00	New
	<u>Outpatient:</u>		
	Individual	\$74.00/Hour	
	Group	\$34.00/Hour	
	<u>Intensive Outpatient:</u>		
	Individual	\$74.00/Hour	
	Group	\$34.00/Hour	
	<u>Adolescent Outpatient:</u>		
	Individual	\$76.00/Hour	
	Group	\$32.00/Hour	
	Total Contract Cap:	\$198,400.00	-123.64%
PA Counseling Services Lancaster, PA	Assessments & Evaluations	\$80.00/Hour	
	Clinical Consultation/Training	\$40.00/Hour	
	Screening	No Charge	
	Transportation	At Cost	
	Two Case Manager Positions	\$73,600.00	-200%
	Medication Assisted Treatment	At Cost	
	Student Assistance Program (SAP)		
	Evaluations & Early Intervention	\$180,000.00	-150%
	<u>Outpatient:</u>		
	Individual	\$74.00/Hour	
	Group	\$34.00/Hour	
	<u>Intensive Outpatient:</u>		
	Individual	\$74.00/Hour	
	Group	\$34.00/Hour	
	<u>Adolescent Outpatient:</u>		
	Individual	\$76.00/Hour	
	Group	\$32.00/Hour	
Total Contract Cap:	\$303,600.00	-172.83%	

-Continued-

<u>Renewal</u> <u>Agreements With:</u>	<u>For:</u>	<u>Amounts</u> <u>Fiscal Year</u> <u>January 1 - June 30, 2026</u>	<u>Percent</u> <u>Increase/</u> <u>Decrease</u>
Pathways to Recovery Bolivar, PA	3.5 Rehab	\$359.00/Day	
	Case Management Services	\$40.00/Hour	
	Medication Assisted Treatment	At Cost	
Ponessa Behavioral Health Lancaster, PA	Assessments & Evaluations	\$80.00/Hour	
	Clinical Consultation/Training	\$40.00/Hour	
	Screening	No Charge	
	Transportation	At Cost	
	Medication Assisted Treatment	At Cost	
	<u>Outpatient:</u>		
	Individual	\$74.00/Hour	
	Group	\$34.00/Hour	
	<u>Intensive Outpatient:</u>		
	Individual	\$74.00/Hour	
	Group	\$34.00/Hour	
	<u>Adolescent Outpatient:</u>		
	Individual	\$76.00/Hour	
Group	\$32.00/Hour		
Total Contract Cap:	\$77,500.00	-294.97%	
Pyramid Healthcare, Inc. Duncansville, PA	3.7 Withdrawal Management	\$435.00/Day	
	3.5 Rehab	\$309.00/Day	
	3.5 Rehab Enhanced	\$338.00/Day	
	3.7 Rehab	\$367.00/Day	
	3.7 Rehab Enhanced	\$360.00/Day	
	Case Management Services	\$40.00/Hour	
	Medication Assisted Treatment	At Cost	
Pyramid Healthcare, Inc. Hillside, PA	3.7 Withdrawal Management	\$474.54/Day	
	3.5 Rehab	\$365.37/Day	
	3.5 Rehab Enhanced	\$379.83/Day	
	3.7 Rehab	\$381.37/Day	
	Case Management Services	\$40.00/Hour	
	Medication Assisted Treatment	At Cost	

-Continued-

<u>Renewal</u> <u>Agreements With:</u>	<u>For:</u>	<u>Amounts</u> <u>Fiscal Year</u> <u>January 1 - June 30, 2026</u>	<u>Percent</u> <u>Increase/</u> <u>Decrease</u>
Pyramid Healthcare, Inc. Langhorne, PA	3.7 Withdrawal Management	\$525.00/Day	+4.19%
	3.5 Rehab	\$403.00/Day	+3.97%
	Case Management Services	\$40.00/Hour	
	Medication Assisted Treatment	At Cost	
Pyramid Healthcare, Inc. Lehigh Valley, PA	3.7 Withdrawal Management	\$493.00/Day	+5.68%
	3.5 Rehab	\$367.00/Day	+2.45%
	3.5 Rehab Enhanced	\$388.00/Day	+2.32%
	Case Management Services	\$40.00/Hour	
Pyramid Healthcare, Inc. Transitions Pittsburgh, PA	3.7 Withdrawal Management	\$444.01/Day	
	3.5 Rehab	\$348.24/Day	
	3.5 Rehab Enhanced	\$365.66/Day	
	Case Management Services	\$40.00/Hour	
Pyramid Healthcare, Inc. Quakertown, PA	3.5 Rehab	\$362.00/Day	+3.31%
	3.5 Rehab Enhanced	\$366.00/Day	+2.19%
	Case Management Services	\$40.00/Hour	
	Medication Assisted Treatment	At Cost	
Pyramid Healthcare, Inc. York, PA	3.7 Withdrawal Management	\$362.00/Day	
	3.5 Rehab	\$348.00/Day	+3.06%
	3.5 Rehab Enhanced	\$360.00/Day	
	Case Management Services	\$40.00/Hour	
	Medication Assisted Treatment	At Cost	

-Continued-

<u>Renewal</u> <u>Agreements With:</u>	<u>For:</u>	<u>Amounts</u> <u>Fiscal Year</u> <u>January 1 - June 30, 2026</u>	<u>Percent</u> <u>Increase/</u> <u>Decrease</u>
R3 Recovery Services Lancaster, PA	Assessments & Evaluations	\$80.00/Hour	
	Clinical Consultation/Training	\$40.00/Hour	
	Screening	No Charge	
	Transportation	At Cost	
	Case Manager Position	\$36,800.00	-200%
	Medication Assisted Treatment	At Cost	
	Student Assistance Program (SAP)		
	Evaluations & Early Intervention	\$450,000.00	
	<u>Outpatient:</u>		
	Individual	\$74.00/Hour	
	Group	\$34.00/Hour	
	<u>Intensive Outpatient:</u>		
	Individual	\$74.00/Hour	
	Group	\$34.00/Hour	
	<u>Adolescent Outpatient:</u>		
Individual	\$76.00/Hour		
Group	\$32.00/Hour		
Total Contract Cap:	\$51,800.00	-200%	
Treatment Trends, Inc. Halfway Home Allentown, PA	3.1 Halfway House	\$174.00/Day	
	Case Management Services	\$40.00/Hour	
	Medication Assisted Treatment	At Cost	
TTI Allentown Residential Allentown, PA	3.5 Rehab	\$312.00/Day	+3.85%
	Case Management Services	\$40.00/Hour	
	Medication Assisted Treatment	At Cost	
White Deer Run Allenwood, PA	3.7 Withdrawal Management	\$371.00/Day	
	3.5 Rehab	\$325.00/Day	
	3.5 Rehab Enhanced	\$336.00/Day	
	Case Management Services	\$40.00/Hour	
	Medication Assisted Treatment	At Cost	

-Continued-

<u>Renewal Agreements With:</u>	<u>For:</u>	<u>Amounts Fiscal Year</u> <u>January 1 - June 30, 2026</u>	<u>Percent Increase/Decrease</u>
White Deer Run Cove Forge, PA	3.7 Withdrawal Management	\$363.00/Day	
	3.5 Rehab	\$303.00/Day	
	3.5 Rehab Enhanced	\$362.00/Day	
	2.5 Partial	\$139.00/Day	
	Case Management Services	\$40.00/Hour	
	Medication Assisted Treatment	At Cost	
White Deer Run Lancaster, PA	3.7 Withdrawal Management	\$396.00/Day	+4.29%
	3.5 Rehab	\$363.00/Day	+3.03%
	3.5 Rehab Enhanced	\$372.00/Day	+2.96%
	Case Management Services	\$40.00/Hour	
	Medication Assisted Treatment	At Cost	
White Deer Run Lehigh County Center for Recovery Lehigh, PA	3.7 Withdrawal Management	\$406.00/Day	+5.91%
	3.5 Rehab	\$312.00/Day	+4.81%
	3.5 Rehab Enhanced	\$343.00/Day	+5.25%
	Case Management Services	\$40.00/Hour	
	Medication Assisted Treatment	At Cost	
White Deer Run New Perspective Lebanon, PA	3.7 Withdrawal Management	\$396.00/Day	+4.29%
	3.5 Rehab	\$285.00/Day	+4.56%
	3.5 Rehab Enhanced	\$321.00/Day	+6.23%
	Case Management Services	\$40.00/Hour	
	Medication Assisted Treatment	At Cost	
White Deer Run York-Davies York, PA	3.7 Withdrawal Management	\$471.00/Day	+1.70%
	3.5 Rehab	\$366.00/Day	+1.37%
	3.5 Rehab Enhanced	\$448.00/Day	+2.01%
	Case Management Services	\$40.00/Hour	
	Medication Assisted Treatment	At Cost	
White Deer Run York-Zion York, PA	3.7 Withdrawal Management	\$336.00/Day	+1.49%
	3.5 Rehab	\$264.00/Day	+0.38%
	3.5 Rehab Enhanced	\$301.00/Day	+0.66%
	Case Management Services	\$40.00/Hour	
	Medication Assisted Treatment	At Cost	

-Continued-

<u>Renewal</u> <u>Agreements With:</u>	<u>For:</u>	<u>Amounts</u> <u>Fiscal Year</u> <u>January 1 - June 30, 2026</u>	<u>Percent</u> <u>Increase/</u> <u>Decrease</u>
The 521 Club Lancaster, PA	Adult Men and Women Recovery Support and Drop-In Center 5 projects/year \$3,850.00/project Total Contract Cap:	\$19,250.00	-110%
Altruix Lancaster, PA	Distribution of Buprenorphine Methadone, Naltrexone and any (Minus co-pays and deductibles) Total Contract Cap:	\$40,000.00	-200%
Donegal Substance Abuse Alliance (DSAA) Mount Joy, PA	Recovery Support Services Recovery Support Specialist for Door to Door Program Recovery Support Specialist For Door to Door Program (Part-time, temporary) Re-Entry Coordinator Position (Opioid Settlement Grant) Total Contract cap:	\$37,500.00 \$31,280.00 \$9,520.00 \$215,500.00 \$293,800.00	-200% New New -37.96% -74.13%
Lancaster General Hospital Lancaster, PA	Medication Assisted Treatment Total Contract Cap:	\$12,500.00	-200%
Lancaster General Hospital Lancaster, PA	Trauma Informed Overdose Response Pathways Grant (Pass Through Grant from SAMHSA) Total Contract Cap:	\$610,771.00	-22.64%
Shawn McNichol	Education, Consultation and Training Services	\$50.00/Hour	

-Continued-

<u>Renewal</u> <u>Agreements With:</u>	<u>For:</u>	<u>Amounts</u> <u>Fiscal Year</u> <u>January 1 - June 30, 2026</u>	<u>Percent</u> <u>Increase/</u> <u>Decrease</u>
Center for Traffic Safety York, PA	DUI Prevention & Education Services Total Contract Cap:	\$16,689.00	-106.72%
COBYS Family Services Leola, PA	Parenting Programs Total Contract Cap:	\$69,445.00	-177.45%
Compass Mark, Inc. Lancaster, PA	Prevention Education Programs for Children & Youth Total Contract Cap:	\$556,060.00	-158.26%
Elizabethtown Area Communities That Care Elizabethtown, PA	School-based Prevention & Education Services, Club Ophelia & PEP Total Contract Cap:	\$9,426.00	-366.79%
Gaudenzia, Inc. Vantage House Lancaster, PA	Prevention Services to Children of Woman Receiving D&A Treatment Services Total Contract Cap:	\$22,620.00	-214.62%
Spanish American Civic Association (SACA) Lancaster, PA	Bi-lingual, Bi-cultural Evidence Based Substance Abuse Prevention Education Services for Latino Children & Families. Includes School-based & Community-based programs. Total Contract Cap:	\$12,750.00	-194.12%
YWCA of Lancaster Lancaster, PA	School based prevention & education services; programs include Girl Power! & YWCA Bigs and Littles Program Total Contract Cap:	\$7,398.00	-153.45%

-Continued-

<u>New</u> <u>Agreements With:</u>	<u>For:</u>	<u>Amounts</u> <u>Fiscal Year</u> <u>January 1 - June 30, 2026</u>	<u>Percent</u> <u>Increase/</u> <u>Decrease</u>
Center for Independent Living of North Central PA Williamsport, PA	<u>Interpreting Service:</u> Standard Interpreting Service After Hours Weekends & Holidays Request less than 48 hours' notice	\$70.00/Hour \$78.00/Hour \$80.00/Hour \$78.00/Hour	New New New New

On motion of Commissioner _____, seconded by Commissioner _____, it was agreed for the County of Lancaster, acting on behalf of the Planning Department, to approve the following:

Agreement With:

Kittelson & Associates
Philadelphia, PA

Purpose:

To develop a Complete Streets Conceptual Plan for PA 462 in Columbia Borough to be implemented with a future PennDOT maintenance project for Work Order No. 10 as part of the Unified Planning Work Program (UPWP).

Amount:

\$36,000.00 (\$23,689.72 for Kittelson & Associates contract plus the use of contingency funds for anticipated additional work).

Term:

Through November 30, 2026.

Funding:

Federal Highway Administration.

4/8/26

March 13, 2026

Project #: 29190.000 WO 10
Kittelison Contract #23-00452

Sharon Cino
Senior Planner
Lancaster County Planning Department

RE: Work Order #10 to develop a Complete Street conceptual plan in Columbia Borough with a future PennDOT maintenance project

Dear Sharon,

Kittelison & Associates, Inc. (Kittelison) is excited to submit this proposal to the Lancaster County Planning Department (LCPD) to deliver a conceptual Complete Street plan and safety improvements for key roadway segments within Columbia Borough. Having collaborated with you on the Complete Streets Prioritization task, we understand your team's thoughtful approach of capitalizing on maintenance opportunities to expand safe access for non-motorized travel throughout the county. We are eager to continue to provide thoughtful, context-sensitive, implementable solutions that can be realized in Columbia Borough through maintenance projects and additional funding mechanisms.

Kittelison brings our extensive Complete Streets, Vision Zero, and multimodal planning and design expertise to this work order. We provide comprehensive transportation engineering, planning, and research services to government agencies and private organizations. Kittelison employs nearly 400 professionals across 30 offices throughout the United States. Our staff is united by collective expertise: our team of skilled professionals and national experts offers decades of progressive research and technological innovation along with a diverse portfolio of industry-leading work. Moreover, we recognize that healthy, sustainable societies depend on efficient, active, and safe multimodal transportation that is cost-effective to manage, operate, enhance, and use over time. From site design to corridor planning, we deliver integrated and innovative solutions that achieve sustainable community goals.

KITTELSON ADVANTAGES:

We focus on context- and community-sensitive Complete Streets solutions. Our core team works on Complete Streets policy, planning, and design projects throughout Pennsylvania and the Northeast.

- We have done significant multimodal safety, planning, and design work **in Lancaster County**, including conceptualizing improvements for non-motorized road users along PA 741, the County's Complete Streets Improvement Prioritization task, administration of the County's Freight Advisory Committee, and evaluation of freight safety, infrastructure, and assets.
- We designed bicycle facilities in the **City of Lancaster** and are assisting the City with administering their Vision Zero Program, evaluating streets for two-way conversation, implementing a Neighborhood Slow Zone Program, and updating the City's High Injury Network.
- We advance **Complete Streets at the state level**, collaborating with PennDOT on the statewide Vulnerable Road User (VRU) Safety Assessment and statewide Highway Safety Network Screening. We are coordinating with **PennDOT District 8** on Complete Streets projects, including the redesign of the Lemoyne Bottleneck. We also work with the District traffic team in reviewing Highway Occupancy Permits.
- Kittelison has worked on several **safety action plans** across the state and region, local **corridor studies**, and regional **active transportation plans** at different scales and contexts in Pennsylvania.

With this deep and broad experience, we are adept at identifying solutions for State Routes that work for both PennDOT and the local municipality, and we are familiar with the maintenance and operations challenges that can accompany Complete Streets improvements in Pennsylvania, especially in smaller towns and boroughs.

We develop concepts that communicate ideas and streamline implementation. Kittelson approaches the concept development process with a focus on identifying solutions with **feasible implementation paths**. We collaborate to develop Complete Streets ideas that are founded on engineering principles. We also **tell a story with our concept graphics**, communicating ideas clearly, concisely, and comprehensively. Furthermore, we will make recommendations that are aligned with the Lancaster Active Transportation Plan and will consider how LCPD and Columbia Borough can pursue additional types of funding. We think “beyond the pavement” to integrate modern mobility approaches with the land use, function, and operation of a corridor to expand access. **See Attachment 1** for examples of how Kittelson conceptualizes and communicates Complete Streets improvements in similar contexts.

We have the right team and we understand Lancaster County. **Tara Hofferth**, PE, will serve as the Project Manager, building upon her previous experience working with LCPD. Tara will be supported by **Jeff Riegner**, PE, AICP, PTOE, RSP1 as the Project Principal. Jeff is an expert in Complete Streets and has led many projects across the region that address safety, expand access, and advance mobility. Tara and Jeff are supported by a team with multimodal safety, planning, and design experience in Lancaster County, as well as experience living, biking, driving, and walking in this type of context. We know how to work efficiently with PennDOT and local municipalities to take ideas from paper to pavement.

PROPOSED APPROACH:

Overall, the deliverables for this project will include:

- A Columbia Borough Complete Streets Plan that includes:
 - A brief narrative documenting the planning and concept development process, including the selection of three street segments in the Borough,
 - Three concept plans, including one concept graphic using AutoCAD for the 3-block segment,
 - A brief narrative for each segment, documenting existing conditions and potential impacts, and
 - A matrix indicating implementation timeline, funding, and partners for the improvements.

1. Project Study Area. Kittelson will conduct a **project kickoff meeting** (up to 90 minutes in duration) with Columbia Borough, LCPD, PennDOT, and the South Central Transit Authority (SCTA), as needed. We recommend hosting this meeting virtually in advance of the site visit (see Task 2). In this meeting, we will discuss project goals, scope, schedule, and budget. We will confirm any data collection needs and assumptions. Kittelson will develop an agenda, meeting materials, and a meeting summary. One Kittelson team member will attend.

We expect to conduct up to two additional 30-minute, virtual meetings with LCPD staff to discuss status and ensure expectations are met. One Kittelson team member will attend each one.

Confirm Study Segments. During the project kickoff meeting, Kittelson will facilitate a discussion on which street segments in the Borough will be included for study and concept development. We expect Chestnut Street and 5th Street might be included. We will work with the kickoff meeting attendees to identify a 3-block study segment for each corridor. We expect the following metrics to influence selection of study segments:

- PennDOT maintenance and resurfacing schedule
- Pedestrian generating land uses, like parks, schools, libraries, shopping centers, and museums
- Locations of bus stops
- Crash history, especially among vulnerable road user (VRU) crashes
- Previous plans and upcoming projects

We expect that the Borough may also have additional context and documented public concerns that will influence study segment selection. Kittelson will obtain and evaluate crash data from the Pennsylvania Crash Information Tool (PCIT) prior to the kickoff meeting. We will collect data for the most recent 5-year period for all crashes, fatal and suspected injury (FSSI) crashes, bicyclists and pedestrian crashes, and horse and buggy crashes.

Our previous effort prioritizing Complete Streets in the County ranked the Chestnut Street, 5th Street, PA 462 corridor as the highest priority for improvements. This was primarily due to frequent crash rates, high vehicle volumes, income and racial equity metrics, and multimodal demand. Key previous planning efforts include the Traffic Safety Action Plan, which has prioritized improvement of the PA 462 and 9th Street ADA ramps, installation of an RRFB at 9th Street, and studying limiting left turns from Union Street onto PA 462. The Active Transportation Plan identified Columbia Borough for a Type 1 mobility hub. The Borough also has a Complete Streets Policy that we will reference in our work. Additionally, the PennDOT VRU Assessment identified PA 462 from Locust Street to Washington Street as a priority for improvements. Upcoming projects include MPMS#123629 and MPMS#123630, including a traffic control signal device, CCTV cameras, emergency preemption lighting, and roadway configuration concepts.

With the limited budget, we recommend moving forward with evaluating and conceptualizing three study segments prior to the end of this fiscal year (June 30th).

Document Objectives. In the Columbia Complete Streets Plan, we will document objectives with particular attention to pedestrian, bicycle, and transit safety. We will emphasize the County's goal of context-sensitive roadway design. Kittelson will verify objectives at the kickoff meeting.

2. Existing Conditions Review and Site Visit. Kittelson will conduct a site visit with PennDOT, Columbia Borough, and LCPD to document existing conditions along the study segments. During the site visit, we will walk along the street segments selected under Task 1. Up to two Kittelson team members will attend. We anticipate the field visit to take about 2 hours. Along the three study segments (3 blocks each), we will observe and document the following:

- Sidewalk widths, conditions, gaps, curb ramps, and ADA compliance
- Street furnishings such as street trees, bike shelters, bike racks, trash receptacles, benches, and bus stop amenities
- Bicycle accommodations, roadway widths, crosswalk locations, signal operations, and signs
- Curb radii, on-street parking, loading zones, and opportunities for curb improvements or changes
- Lighting, drainage features, and utility infrastructure
- Potential safety concerns, such as speeding, conflict points, crossing distances, and visibility constraints
- Freight and loading operations

To best capture this data, we might use a GoPro to record the conditions along each street. Given that this is concept development and not final design, no survey data will be collected. It is anticipated that our segment infrastructure inventory will be complete enough to make decisions at the concept level.

Summarize Existing Conditions. Kittelson will summarize existing conditions for the study segments in the Columbia Complete Streets Plan document. This will include photos, corridor observations, and a narrative of constraints and opportunities. We will incorporate readily available desktop data, such as the location of bus stops, Average Annual Daily Traffic (AADT), and functional classification.

3. Concept Development. Under this task, we will develop concept plans for three study segments that address local needs.

Develop Concept Plans. For each concept plan, we will develop one concept graphic using AutoCAD for the 3-block segment. We might supplement this graphic with up to four precedent images and one typical cross section (using Streetmix).

We expect that potential improvement recommendations might include:

- Sidewalk improvements
- Bicycle facilities
- Crosswalk enhancements
- Curb extensions and daylighting to shorten crossings and improve sight lines
- Painted medians and pedestrian refuge islands
- Signal modifications, including no turn on red and leading pedestrian intervals
- Lighting enhancements
- Bus stop connectivity
- Changes to on-street parking and loading zones
- Streetscape enhancements

Kittelson will deliver the draft concepts to LCPD, Columbia Borough, and PennDOT for one round of review. During this review period, Kittelson will also seek feedback from stakeholders and community members (see Task 4). We will incorporate all feedback received during this one round of review into the final concept plans submitted as part of the Complete Streets Plan.

Document Impacts. For each study segment, the concept plan will highlight key potential impacts and coordination needs. We will consider potential right-of-way needs, drainage impacts, utility conflicts, environmental resources, emergency response changes, and the delivery of city services. We will flag potential impacts to on-street parking, loading zones, driveways, and business operations. Kittelson will develop concepts based on local and PennDOT engineering standards. Where critical, we will confirm truck or bus turning movements. We will not perform traffic operations analysis, but will contemplate and document potential transportation tradeoffs. This evaluation will be a starting point for future designs.

Plan for Implementation. We will develop a simple matrix outlining key implementation factors for each street segment. The matrix will document high level ideas for how to move improvements forward, including potential funding sources and key partners. We will include this matrix in the final Plan.

4. Public Engagement. Kittelson will coordinate with Borough staff to engage local businesses, residents, and key stakeholders. This engagement will inform the strategies identified and the corresponding concept plans. We anticipate that this engagement will not inform street segment selection.

Public / Stakeholder Meeting. One Kittelson team member will participate in one public / stakeholder meeting. We will host this meeting virtually for up to 90 minutes. We will work with LCPD and the Borough to identify key stakeholders that should be specifically invited. This might include SCTA, business owners, elected officials, emergency providers, residents, developers, and agency partners. We will also support LCPD in advertising the meeting publicly, as appropriate.

We will prepare a meeting agenda and materials to facilitate rich discussion. Kittelson will share concept plans with attendees, seeking feedback related to key transportation tradeoffs and community values.

Engagement Summary. Kittelson will summarize the input received into meeting notes. This summary will inform edits to the concepts, as discussed under Task 3.

5. PennDOT Coordination. Kittelson will coordinate with PennDOT throughout Plan development by including PennDOT in the kickoff meeting. We will also meet with PennDOT for a 1-hour virtual meeting to discuss the draft concepts. It will be especially critical to collaborate with PennDOT regarding future improvements associated with PA 462 resurfacing project. We will refine the concepts based on this input as well as the other input received to deliver the final concept plans.

Project management and drafting of the Complete Streets Plan are baked into each of the tasks above. Additional details on staffing, budget, and schedule are attached / provided below. We thank you for this opportunity and are committed to delivering this scope of services in accordance with all requirements of the Master Grant Agreement (Agreement No. C920001369).

Please direct any questions to Tara.

Sincerely,

KITTELSON & ASSOCIATES, INC.



Tara Hofferth, PE
Project Manager



Pete Jenior, PE, PTOE
Principal Engineer

KEY PERSONNEL

The Kittelson team is structured to provide LCPD with expertise, local understanding, and capacity as discussed below.



Tara Hofferth will serve as Project Manager. Tara is a senior transportation planner / engineer that is passionate about working with communities to build equitable, sustainable access. Tara's 11-year career has focused on Complete Streets, Vision Zero, safety action planning, multimodal network planning, active transportation strategies, implementation planning, concept development, corridor studies, and community engagement. Tara has recently worked with LCPD on the Complete Streets Prioritization, PA 741, and Freight Advisory tasks. Her management style is guided by values of transparency, collaboration, organization, and innovative thinking.



Jeff Riegner will serve as Project Principal. Jeff has over 30 years of progressively responsible experience in wide-ranging multimodal transportation planning and design projects. In addition to experience working with LCPD and serving the City of Lancaster, Jeff led development of PennDOT's Vulnerable Road User Safety Assessment. He also brings a national perspective as the immediate past chair of the National Complete Streets Coalition.



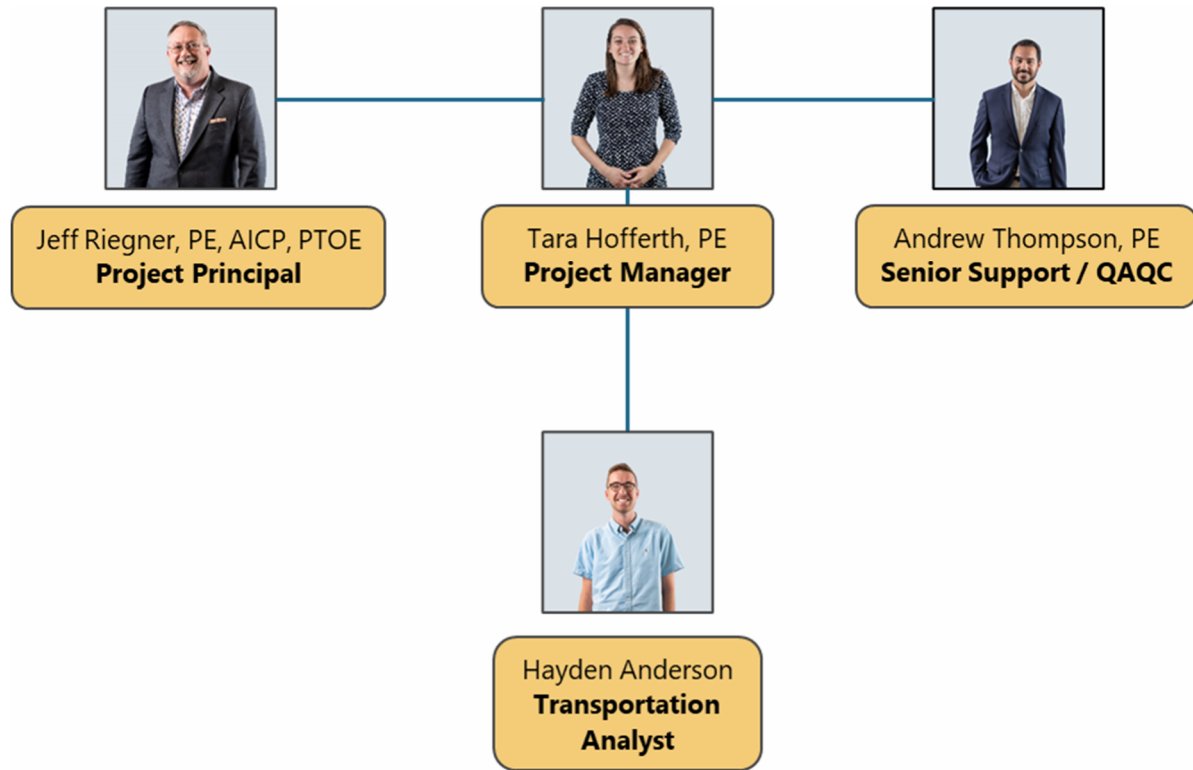
Hayden Anderson will serve as the main planning and design analyst. Hayden develops safety countermeasure concepts using AutoCAD and other software programs, which are informed by crash patterns, community input, and collaboration with colleagues. Hayden supports projects across the country, including bikeshare station design in New York City, speed management strategies for the National Park Service, and traffic impact analyses across the East Coast.



Andrew Thompson will offer senior design and technical support. Andrew has 10 years of experience delivering projects focused on innovative and multimodal design. Andrew has designed, reviewed, and delivered over 100 innovative intersection and Complete Streets corridor designs.

ORGANIZATIONAL CHART

The following organizational chart shows how we intend to organize and manage our team to ensure efficiency and maximize the quality of the product delivered to LCPD. As discussed above, Tara will manage the team with support from Jeff. Andrew will provide technical support and quality assurance. Hayden will serve as the transportation analyst. This team is eager to collaborate with Columbia Borough, LCPD, and PennDOT.



TASKS AND ASSOCIATED COSTS

The total anticipated cost for this scope of services is \$23,689.72, including the 10% contingency. The budget to manage the effort and draft the Plan are incorporated into the individual tasks below.

Task	Cost
1. Project Study Area	\$3,573.91
2. Existing Conditions Review and Site Visit	\$5,447.48
3. Concept Development (3 Segments)	\$10,496.31
4. Public Engagement	\$1,491.24
5. PennDOT Coordination	\$527.17
Cost	\$21,536.11
10% Contingency	\$2,153.61
Total Cost	\$23,689.72

SCHEDULE

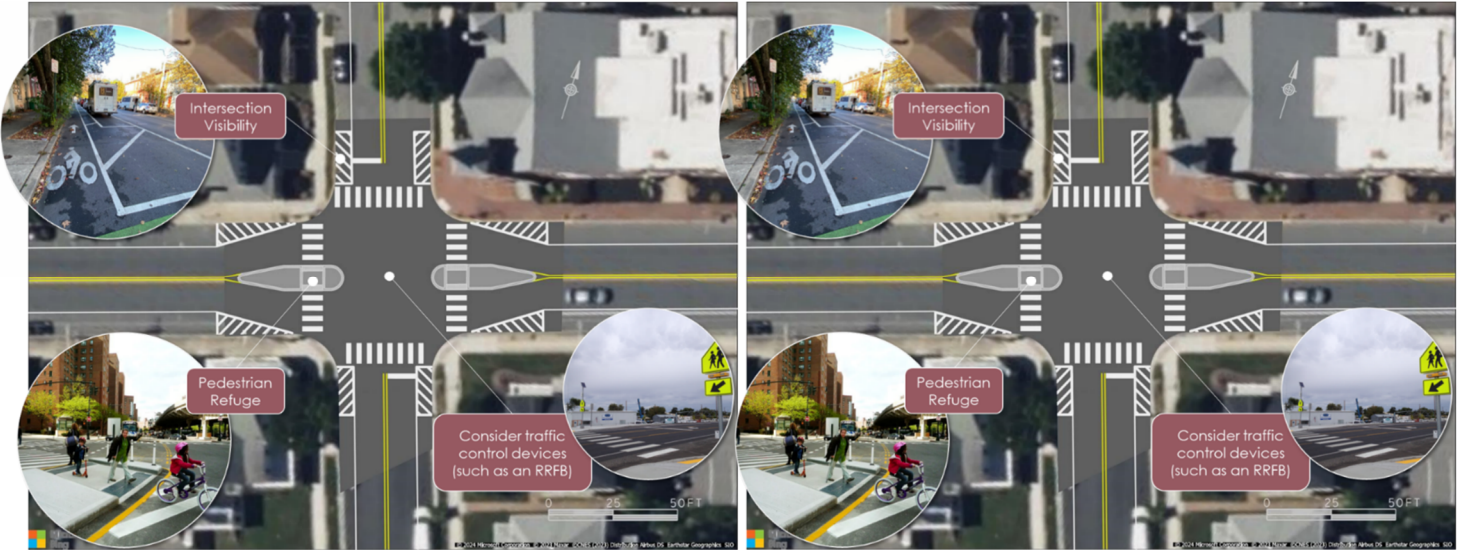
With this team and approach, we anticipate providing draft concept plans (for three street segments) to LCPD by June 30, 2026. We will deliver final concept plans by August 31, 2026. Documented information will be available to LCPD to provide updates to ATAC on May 14, 2026, August 13, 2026, and October 8, 2026.

This schedule can be adapted in collaboration with LCPD per discussions in the kickoff meeting. In accordance with the Master Agreement, Kittelson will provide monthly progress reports to LCPD during the length of this work order.

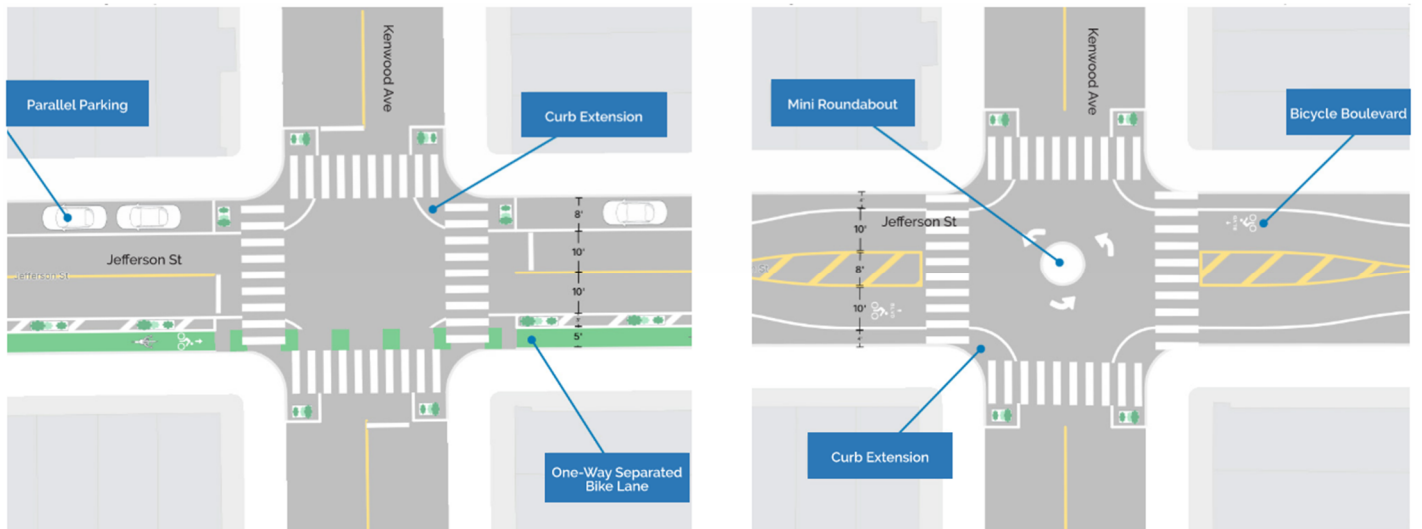
TASK	APR	MAY	JUN	JUL	AUG
Project Study Area	Kickoff Meeting				
Existing Conditions Review and Site Visit	Field Visit				
Concept Development			Draft by 6/30/26	Agency Review	Final by 8/31/26
Public Engagement				Public / Stakeholder Meeting	
PennDOT Coordination	Kickoff Meeting			PennDOT Meeting	

ATTACHMENT 1

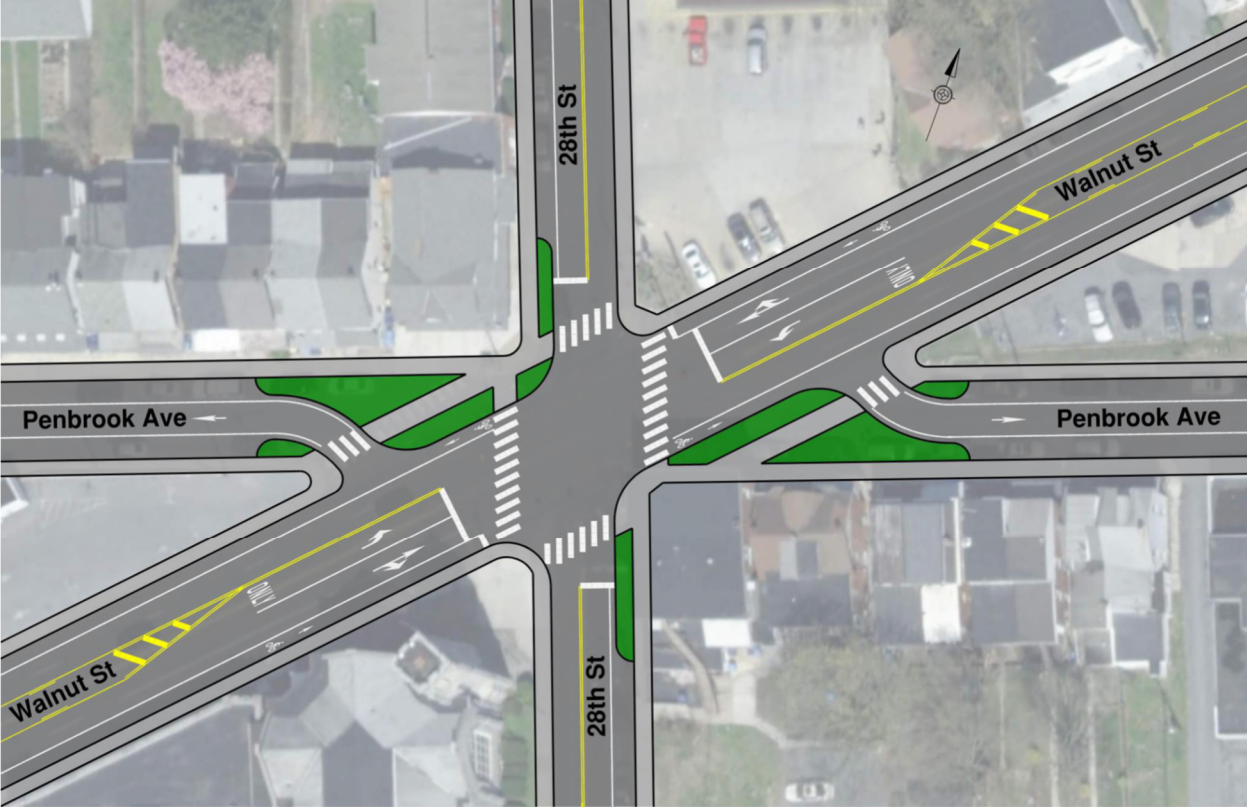
See below examples of how Kittelson develops concepts to communicate Complete Streets ideas:



These are concepts that our team developed for improving walking and biking routes in downtown Dover, DE.



These are concepts that our team developed for the City of Baltimore to explore quick build installations.



We developed this concept plan for the TCRPC Safety Action Plan.

On motion of Commissioner _____, seconded by Commissioner _____, it was agreed for the County of Lancaster, acting on behalf of General Services, to approve the following:

Agreement With:

George Ely Associates, Inc.
Carlisle, PA

Purpose:

To provide and install three new playgrounds in Lancaster County Central Park at pavilions 1, 2 and 3.

Amount/Term:

\$161,346.00

Funding:

2026 Capital budget.
COSTARS Cooperative contract.

4/8/26



800.262.8448
717.243.0439 Fax
ely@pa.net

PO Box 396
Carlisle, PA 17013

GeorgeElyAssociates.com

March 8, 2026

2026 PROPOSAL

*Pavilions #1, #2, & #3
Playground Equipment*

Keith Wilson
County of Lancaster
950 Eshelman Mill Rd.
Lancaster, PA 17602



1 ea.	Pavilion #1	#350-2001 Challengers play structure	\$ 42,764.00
1 ea.	Pavilion #2	#350-1832 Challengers play structure	40,073.00
1 ea.	Pavilion #3	#350-2260 Challengers play structure	<u>39,826.00</u>
			\$ 122,663.00
		DISCOUNT	<u>- 9,200.00</u>
			\$ 113,463.00
1 ea.	#FREIGHT	Shipping	<u>3,450.00</u>
			\$ 116,913.00
1 ea.	#INSTALL	Installation of above equipment (prevailing wage rate)	<u>44,433.00</u>
			\$ 161,346.00

PA State Contract COSTARS-014-E23-299

NOTE: Prices effective for 60 days

- Prices include delivery, receiving & unloading, assembly, & installation
- Prices do not include recommended resilient material
- Prices do not include removal or disposal of existing equipment
- Prices do not include site preparation or excavation
- Prices do not include borders or drainage
- Prices do not include finish grading or seeding
- Prices do not include permits, PA sealed engineering, bonding, or 3rd party inspections

Allow 4-6 weeks for delivery; installation to follow
Equipment Payment Terms: 50% Deposit, Net 30 days after shipping
Installation Payment Terms: Upon completion

To place an order, please verify the above information, choose colors, confirm site addresses, indicate billing address, contact name & phone number, sign below & return with deposit...

X _____

Thank you, Dave Ely

We accept MC, Visa, Disc, & Amex.
(ADD 2% for credit card purchases)
Buyer agrees to pay a monthly late charge of 2% commencing 30 days after invoice date.

On motion of Commissioner _____, seconded by Commissioner _____, it was agreed for the County of Lancaster, acting on behalf of General Services, to approve the following:

Amended Agreement With: RETTEW Associates, Inc.
Lancaster, PA

Purpose: To make modifications to the scope of work for the Big Conestoga 7A and 7B bridge rehabilitation project for repairs as well as submit a PennDOT permit to allow for work within the waterway (Conestoga River).

Big Conestoga 7A is the Strawberry Street Bridge to Central Park and Big Conestoga 7B is located on Circle Avenue at the Youth Intervention Center.

Original Amount: \$182,400.00

Addendum #1: (10/2/24) \$20,200.00

Addendum #2: \$29,800.00

Final Contract: \$232,400.00

Funding: County Liquid Fuel Funds.

4/8/26

PROJECT CHANGE ORDER/ADDENDUM

DATE:	March 10, 2026	PROJECT #:	
PROJECT NAME:	Big Conestoga 7A & 7B Rehabilitation	ADDENDUM #:	2
WORK/CHANGE REQUESTED BY:	Robert Devonshire, Jr. County of Lancaster	WORK/CHANGE RECEIVED BY:	David D. Miller, PE RETTEW Associates, Inc.

WORK/CHANGE REQUESTED:

A. ADDITIONAL SERVICES (PHASE 670)

To address comments within the bridge inspection reports (Bridge 7A 7/18/2024; Bridge 7B 7/18/2024), RETTEW will:

1. Bridge 7A – Include locations and quantities of:
 - a. Map-cracking (i.e., concrete sealing), spalling and delamination repair work.
 - b. Scour protection repair work.
 - c. Diaphragm repair work.
2. Bridge 7B – Include locations and quantities of:
 - a. Concrete barrier crack repair.
 - b. Hairline crack, map-cracking (i.e., concrete sealing), and delamination repair work.
 - c. Superstructure spalling repair work.
 - d. Substructure scaling, cracking, and spalling repair work.

Total Proposed Fee for Phase 670 (Lump Sum) \$6,200.00

B. BIG CONESTOGA 7B REPAIRS GP-11 (PHASE 405B)

Preliminary review indicates that the project will require a PA DEP Chapter 105 Water Obstructions and Encroachment General Permit No. 11 (GP-11) for the bridge superstructure replacement. The proposed project will also require Section 404 authorization, which will be issued through the PASPGP-6. It is anticipated that the project will meet the GP-11 conditions.

RETTEW will:

1. Conduct a detailed identification and delineation of any wetlands and watercourses for the proposed bridge project. The wetlands delineation area of investigation (AOI) for the proposed project will follow the proposed limit of disturbance required for the proposed bridge repair activities.
2. Delineate in the field the location of any wetland boundaries using the criteria in the new United States Army Corps of Engineers (USACE) 2012 *Regional Supplement to the Corps of Engineers Wetland Delineation Manual: Eastern Mountains and Piedmont Region (Version 2.0)*. We will gather the necessary data to document uplands and any wetland areas and complete a wetland data sheet for each sample point used to determine upland and wetland areas. Based on the review of aerial mapping and other secondary resource information including the Lancaster County Soil Survey, U.S. Geological Survey Topographic Quadrangle, and National Wetlands Inventory Map, we anticipate delineating one stream and two wetlands in the AOI.

3. Locate and map stream/wetland boundaries using a Trimble Global Positioning System (GPS) receiver. The data will then be downloaded, processed, and plotted on aerial base maps.
4. Prepare a Wetland Delineation Memorandum summarizing the conditions encountered in the AOI and the methodology used in determining upland areas and any water resource boundaries. This memorandum will include a justification of the findings, data sheets, mapping, and photographs, and will be suitable for regulatory review and permit applications.
5. Conduct an online search of the Pennsylvania Natural Diversity Inventory (PNDI) database. This database contains information about previously recorded threatened, endangered, and special concern plant and animal species/habitats as well as unique geologic formations. If necessary, one round of state agency coordination letters will be completed and submitted to the appropriate agencies in an attempt to resolve any PNDI conflicts. If directed by the PNDI for potential impacts to federal species, the project information will be uploaded to the U.S. Fish and Wildlife Service (USFWS) Information for Planning and Consultation (IPaC) digital project planning tool. Our scope assumes coordination with the USFWS to obtain project clearance will be required. Field surveys or providing data beyond additional project details to resolve any conflicts are not included.
6. Prepare notifications to the appropriate county and municipality notifying them of the intent to submit the permit application.
7. Prepare a General Permit (GP) registration package, including the General Permit Registration Form, location map, Chapter 105 Fee Calculation Worksheet, project plans, cross section drawings, site photographs, and other supporting documentation as required. Project impacts will be quantified and included in the Aquatic Resource Impact Table.
8. Prepare the Erosion and Sedimentation (E&S) Pollution Control Plans and Roadway Plans in accordance with the requirements of PA DEP and the Lancaster County Conservation District for inclusion in the permit application.
9. The section of the Conestoga River in the project area is identified as a Pennsylvania Fish and Boat Commission (PFBC) Pennsylvania Water Trail and recreationally navigable according to *Keystone Canoeing*. An Aids to Navigation (ATON) Plan will be submitted to the PFBC for review and approval. The approved ATON Plan will be included in the GP-11 permit package.
10. The section of the Conestoga River in the project area is also listed as a navigable waterway by the PADEP and is considered submerged lands of the Commonwealth. A Submerged Lands License Agreement (SLLA) Information Package that includes the required mapping, drawings, company information, and project information will be included in the GP-11 Permit package.


Deliverable: Wetland Delineation Memorandum, PNDI Search Receipt and agency correspondence if applicable, and GP-11 registration package for submission to the appropriate PA DEP Regional Office.

Total Proposed Fee for Phase 405B (Lump Sum)..... \$23,600.00

TOTAL FOR THIS ADDENDUM:	\$29,800.00 LS
ORIGINAL AGREEMENT AMOUNT	
DATED: <u>May 9, 2024</u>	\$182,400.00 LS
TOTAL OF PREVIOUS ADDENDUM(A):	\$20,200.00 LS
AMENDED AGREEMENT AMOUNT:	\$232,400.00 LS

If this addendum is satisfactory and acceptable and fully sets forth all the items of our understanding, please signify your acceptance by signing below. Please return a fully executed copy and retain a copy for your records. This document will then constitute our completed agreement.

This addendum will be subject to all the terms and conditions of our previous proposal and agreement dated 5/9/24.

BY: _____ (COUNTY SIGNATURE)	BY:  (RETTEW SIGNATURE)
Lawrence M. George _____ (PRINTED NAME)	David D. Miller, PE _____ (PRINTED NAME)
TITLE: Chief Clerk _____	TITLE: County Engineer _____
DATE _____	DATE: March 10, 2026 _____

\\EgnyteDrive\rettew\Shared\Projects\03830\0383001455 - Big Conestoga 7A Rehabilitation\00 Contracts\02 Addenda\Addendum 02\Addendum 02.docx

LANCASTER COUNTY COMMISSIONERS' MEETING AGENDA
WEDNESDAY, APRIL 8, 2026
7:00 p.m. – East Cocalico Township Municipal Building
100 Hill Road, Denver, PA



1. Meeting Called to Order: This evening's meeting will be conducted by Commissioner Joshua G. Parsons.
2. Pledge of Allegiance
3. Minutes as Distributed: Approval of the April 1, 2026 Commissioners' Meeting Minutes.
4. Old Business:
5. New Business:
 - a. **Welcome and Thank You**
Board of Commissioners
 - b. **East Cocalico Township Welcome and Opening Remarks**
Lorenzo Bonura, Chairman of the Board of Supervisors
 - c. **Drug and Alcohol Commission – New and Renewal Contracts**
Nicole Snyder, Acting Director
 - d. **Planning Department – Agreement with Kittelson & Associates**
Will Clark, Executive Director
 - e. **General Services –**
Bob Devonshire, Director
Carmen Simone, Deputy Director

Agreement with George Ely Associates, Inc.

Addendum with RETTEW Associates

6. Business from Guests
7. Adjourn