

Annual Report 2006—2007



Lancaster County Drug and Alcohol Commission

Executive Director

Rick Kastner

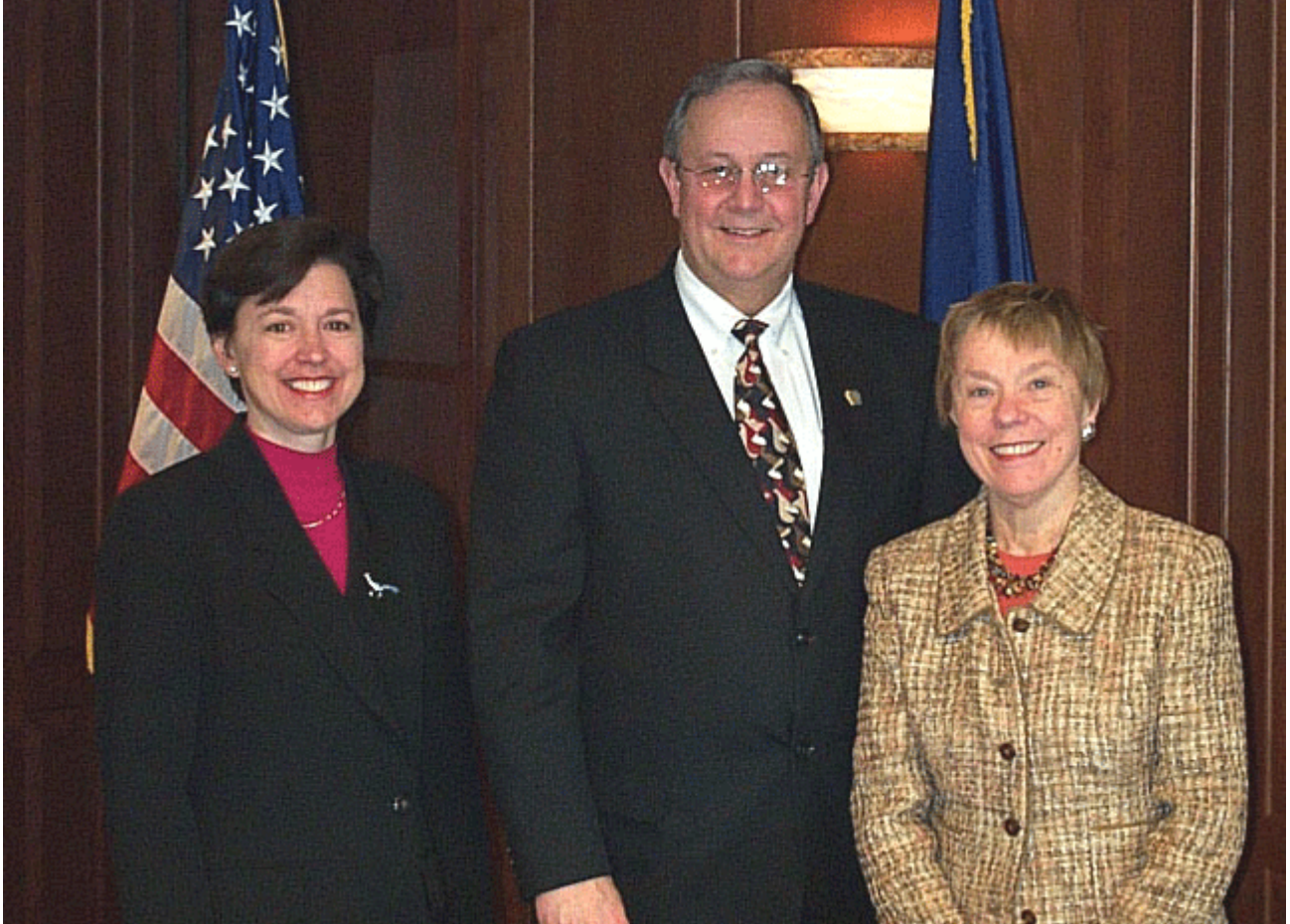
County Commissioners

Dick Shellenberger, Chair

Sharron V. Nelson

Molly S. Henderson

Lancaster County Drug and Alcohol Commission



Lancaster County Commissioners: Molly Henderson, Dick Shellenberger, Sharron Nelson

Mission

The Lancaster County Drug & Alcohol Commission provides access to high quality, community-based drug and alcohol prevention/education services for all citizens; treatment services to uninsured and under-insured low-income citizens; and tobacco education, cessation, and enforcement in an efficient and cost effective manner in the County of Lancaster, PA.

Table of Contents

•Note From the Executive Director.....	2
•Introduction.....	3
•SCA Board and Staff.....	4
•Where We Get Our Resources.....	6
•How Our Funds Are Used.....	7
•The People We Serve.....	11
•We Make a Difference: Our Impact on the Community.....	15





From the Executive Director:

This Annual Report provides some of the details of the programs we manage and the services we provide in Lancaster County. This fiscal year will be remembered for the treatment budget crisis we unexpectedly found ourselves in.

With three months left in the fiscal year, we essentially ran out of treatment funding. Although the treatment budget is a relatively small \$2.5 million, we have never run out of money so soon in the year. We were faced with shutting down all detox, rehab, and halfway house placements. With assistance from our providers and some very creative ideas, we were able to continue treatment for many of our clients during these three months.

Since public funding for drug and alcohol programs rarely receives even a cost of living increase, we can expect many more budget crises. Lancaster's population is now reaching 500,000, and some of these citizens do not have insurance that covers substance abuse treatment. The demand for our limited funding will continue to increase. My office will need to be more creative in order to avoid an all out treatment budget meltdown. The need is great. Consider that:

- ◆ PA Dept. of Health data indicates that there are over 50,000 addicts and alcoholics in Lancaster County.
- ◆ 70% of inmates in our county prison are substance abusers.
- ◆ In Lancaster County, there are approximately 500 alcohol-related crashes each year. On average, there are 15 alcohol-related deaths.
- ◆ More than 1,200 DUIs are issued in Lancaster County each year.

This is also the final year my office will be managing the tobacco cessation, prevention, and enforcement grant. The state Department of Health has decided to have this project managed by a regional contractor, and therefore my agency will no longer be directly involved. Instead of 44 locally based tobacco contractors, there are now only eight agencies in Pennsylvania overseeing the tobacco grant.

If you have any questions or suggestions about this report, I encourage you to call me at 717-299-8023, or e-mail me at rkastner@co.lancaster.pa.us. We are proud of the services we deliver and the providers we support.

Respectfully submitted,

INTRODUCTION



HISTORY

The Lancaster Single County Authority (SCA) was originally created in the 1970's as an SCA Planning Council, a department within the Lancaster County Mental Health/Mental Retardation Program (MH/MR Program). The SCA was a unit of the MH/MR Program, reporting to the MH/MR, D&A Program Administrator. Due to the need for greater autonomy and public focus on the drug and alcohol field, the Lancaster SCA was transferred to a Public Executive Commission in January, 1989. The SCA Public Commission is a separate county department which reports to the Board of County Commissioners.

ADMINISTRATION

The Lancaster SCA administrative unit consists of an Executive Director, Administrative Assistant, Chief Fiscal Officer, Fiscal Technician, and two support staff. The unit develops the annual plan and annual report, develops and monitors the contracts, collects outcome data, creates new services, supports the advisory board, collects/enter data, processes invoices, and completes fiscal reports.

PREVENTION UNIT

The Prevention Unit is a functional unit of the Lancaster County Drug and Alcohol Commission, the Single County Authority of Lancaster County. It was established in 1975 to assess needs, plan strategies, and provide services to deter the onset of drug abuse among youth and adults. The unit provides some services directly, such as training and technical assistance for service providers, program development, community development, planning and evaluation. Direct education and intervention services for children, adults, and families are provided through contracts with schools and human service agencies. The prevention unit is also the PA Department of Health primary contractor for the Tobacco Master Settlement Act (MSA) for Lancaster County. This was the last full year that the office managed the tobacco services.

CASE MANAGEMENT

The Case Management Unit is also provided directly by the Lancaster County Drug and Alcohol Commission. It includes one supervisor and four (4) case management positions. The unit provides intensive case management services for fifteen (15) clients, monitors the contracted treatment facilities, participates on the CASSP clinical team, clinically verifies the level of care data for placement into residential programs, screens requests for treatment, identifies gaps in service, develops new treatment programs, participates on the MPP review team, and presents the drug and alcohol system to potential referral sources.

Case management services such as liability determination, screening, and assessments are sub-contracted to and provided by the licensed outpatient clinics and detox units. All treatment services, which includes detox, residential rehabilitation, halfway house, outpatient, methadone maintenance, intensive outpatient, and partial services are purchased at licensed treatment programs.

The Lancaster County Drug and Alcohol Commission Single County Authority (SCA)

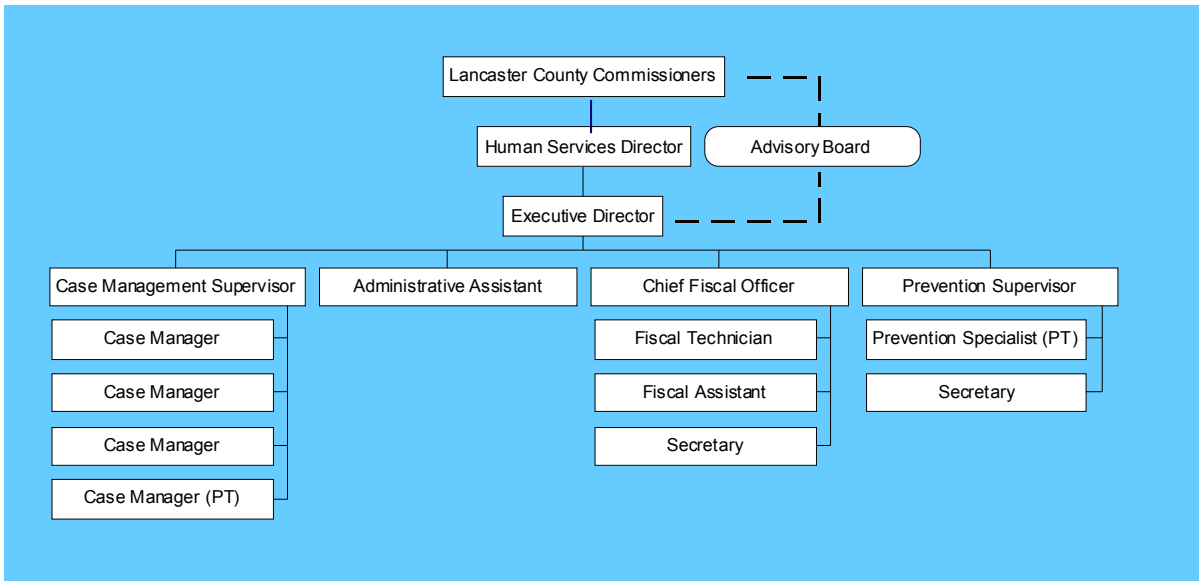
An Advisory Board of citizen volunteers, selected by the Lancaster County Commissioners, assists the Executive Director in prioritizing the services and “steering the ship”. Recommendations from this Board are presented to the County Commissioners, who consider the citizens’ recommendations and then decide on a course of action.

Members of the SCA Advisory Board cannot be relatives of staff, contracted treatment providers, County staff or anyone associated with or related to programs which are contracted with the Drug and Alcohol Commission. Members are independent, volunteer citizens.

If you would like further information about becoming a member of the Lancaster County Drug and Alcohol Commission Advisory Board, please call the Executive Director at 299-8023.



SCA Board members (seated): Kay Moyer, Peggy Atkins, Ina Elliot, and Winifred Rambler. Standing: Donna Sensenig, Vicki Bollman, Steve Brubaker, Kim Long, and Chairperson Lisa Koogle. Not pictured: Frank Ammerman, Laurie Gordon, and Commissioner Dick Shellenberger.



Lancaster County D&A Commission Staff

Executive Director, Rick Kastner, M.Ed.
 Administrative Assistant, Marcia Musser
 Chief Fiscal Officer, Sean Kane
 Fiscal Technician, Brenda Geiter
 Fiscal Assistant, Cindy Lawson
 Secretary, Dolores Walker
 Case Management Supervisor, Ilyasha Michael
 Case Manager, Beth Bulat
 Case Manager, Heather Gilroy
 Case Manager, Becky Sayeg
 Case Manager, Niki Snyder
 Prevention Supervisor, Renee Watts
 Prevention Specialist, Lisa Starr
 Secretary, Andria Palm



Where We Get Our Resources

Schedule of Applied Expenses by Funding Source

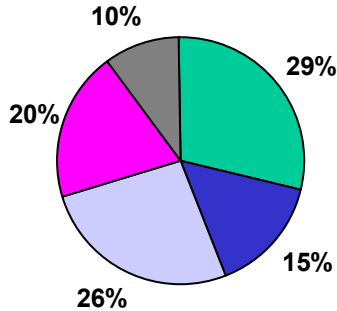
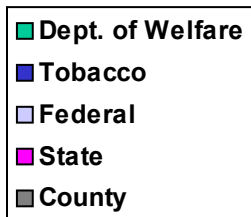
July 1, 2006 through June 30, 2007

Activity	BDAP/ DOH Allocation	BHSI IGT Act 152	HSDf	County Match	Other Funds*	Health Choices	Tobacco	Total Applied Expenses
Admin.	\$330,064			\$100,985	\$762	\$92,184	\$5,622	\$529,617
Prevention:								
Education	\$281,403		\$178,352		\$5,957	\$7,006	\$109,202	\$581,920
Information	\$104,407			\$59,479	\$25,711	\$560	\$75,606	\$265,763
Alt Activities	\$73,613						\$8,572	\$82,185
Problem Ident	\$53,442						\$15,808	\$69,250
Comm Based	\$55,673				\$9,818	\$30,170	\$466,581	\$562,242
Environment							\$52,386	\$52,386
Intervention:								
Asst Programs	\$151,129							\$151,129
Other Interven	\$39,119	\$29,285						\$68,404
Inpatient Non-Hospital:								
Detox	\$49,042	\$201,566						\$250,608
Rehab	\$320,321	\$938,499						\$1,258,820
Halfway House	\$43,971	\$187,476						\$231,447
Inpt Hospital:								
Detox		\$6,789						\$6,789
Rehab		\$6,939						\$6,939
Partial Hosp	\$17,682	\$9,794						\$27,476
Outpatient:								
Outpatient DF	\$430,567	\$1,440						\$432,007
Intensive O/P	\$59,682	\$420						\$60,102
Maintenance	\$42,759	\$180						\$42,939
Case Mgmt	\$190,295	\$12,368						\$202,663
Totals	\$2,243,169	\$1,394,756	\$178,352	\$160,464	\$42,248	\$129,920	\$733,777	\$4,882,686

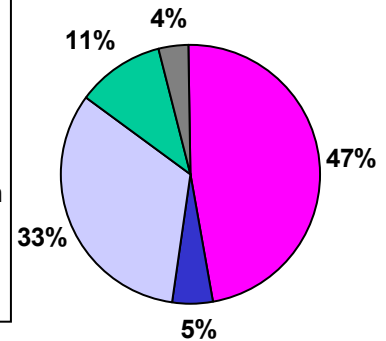
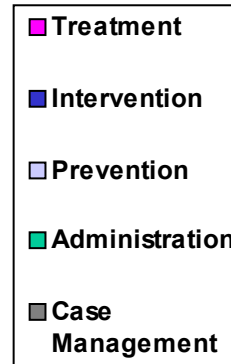
*Other includes interest, refunds, State Incentive Grant (SIG), and Maximum Participation Project (MPP).

How Our Funds Are Used

Sources of Funds by Percent



Uses of Funds by Percent



Description of the Service Delivery System

Client entry into the Lancaster County Drug and Alcohol Treatment system occurs through the outpatient facilities or detox units. There is no separate central intake office, or County Department that the client enters before receiving treatment. The client simply makes an appointment with a counselor in one of the contracted outpatient facilities, or is admitted into the detox unit. The staff in these facilities conduct an evaluation and develop a treatment plan. If the evaluation indicates a need for D&A partial hospitalization services or residential rehab treatment, the counselor contacts the County Drug and Alcohol office to arrange the services and secure the funding. A client's eligibility for County D&A services is determined at the outpatient level through a process that focuses on family income.

The Lancaster County Drug and Alcohol Commission also provides D&A prevention and education programs, which usually focus on children and adolescents, or their adult caretakers. The unit provides some services directly, such as training and technical assistance for service providers, program development, community development, planning and evaluation. Direct education and intervention services for children, adults, and families are provided through contracts with schools, human service agencies, and grassroots community organizations.

Net Expenditures to Service Providers

July 1, 2006- June 30, 2007

Activity Code	Facility Name	Facility ID	Net Expense to SCA	# of Clients Placed	# of Units	
Administration #51	Lancaster County SCA	326000	\$529,617			
	Prevention Inform Dissem #61 Education #62 Altern Activities #63 Prob Iden & Ref. #64 Comm Based #65 Environmental #66 Other #67 State Incentive Grant (SIG) Tobacco	SCA Prevention Unit	361190	\$190,157		
				\$472,718		
				\$73,613		
				\$53,442		
				\$95,661		
				\$0		
				\$0		
				\$17,937		
				\$733,777		
	Prevention Total		\$1,637,305			
Assistance Programs #71	PA Counseling Services	367070	\$135,682			
	Penn Manor School District	N00180	\$15,000			
	McCommons, Paula S., Ed.D.	N00895	\$447			
	Assistance Total		\$151,129			
Other Interventions #72	Lancaster County MH/MR	N00065	\$10,000			
	Family Services	367033	\$39,991			
	AAA DUI Council	N00709	\$18,413			
	Other Interventions Total		\$68,404			
Inpatient Non-Hospital Detox #82A	Bowling Green	157024	\$25,090	25	133	
	Gaudenzia, Common Ground	227036	\$9,990	13	52	
	Roxbury	287017	\$19,228	29	109	
	White Deer Run, Lancaster	367058	\$102,710	166	617	
	WDR- New Perspectives	387017	\$53,324	68	307	
	WDR- Allenwood	601031	\$40,266	61	246	
	Inpatient N/H Detox Total		\$250,608	340	1,464	

Net Expenditures to Service Providers

July 1, 2006- June 30, 2007

Activity Code	Facility Name	Facility ID	Net Expense to SCA	# of Clients Placed	# of Units
Inpatient Non-Hospital Rehab #82B	Lanco Juv. Prob. And Parole	N00357	\$28,710	1	0
	Conewago, Wernersville	067068	\$1,340.00	1	10
	Bowling Green	157024	\$118,224	39	636
	Conewago Place	227065	\$13,000	6	100
	Common Ground	227036	\$66,330	18	370
	Roxbury	287017	\$235,780	54	1,145
	Vantage	367044	\$9,026	4	53
	WDR- Lancaster	367058	\$304,209	102	1,961
	Nuestra Clinica	367076	\$103,860	28	600
	WDR- New Perspectives	387017	\$169,540	49	1,088
	WDR- Allenwood	601031	\$167,815	68	1,066
	Manos, DARS Inc.	361119	\$5,696.00	8	64
	Keenan House, Treatment Trends	391124	\$11,187.00	4	99
	Fountain Springs	547013	\$24,102	3	141
	Inpatient N/H Rehab Total			\$1,258,819	373
Inpatient Non-Hospital Halfway House #82C	Daystar Center	227077	\$29,169	4	337
	Good Friends	93259	\$53,345	13	712
	WDR-Cove Forge	117043	\$6,300	2	75
	Evergreen House	227076	\$2,250	3	24
	Gate House for Men	361369	\$99,456	33	1,228
	Gate House for Women	367045	\$16,164	9	188
	Treatment Trends	391139	\$24,763	9	288
	Halfway House Total			\$231,447	73
Inpatient Hospital Detox #83A	Valley Forge Medical Center	465121	\$2,359	1	5
	Eagleville Hospital	461031	\$4,431	2	9
	Inpatient Hospital Detox Total			\$6,790	3
Inpatient Hospital Rehab #83B	Eagleville Hospital	461031	\$6,939	1	14
Partial Hospitalization #85	H.S.A.- Lancaster	367021	\$14,210	13	592
	WDR- Williamsport	417030	\$13,266	13	196
	Partial Hospital Total			\$27,476	26

Net Expenditures to Service Providers

July 1, 2006- June 30, 2007

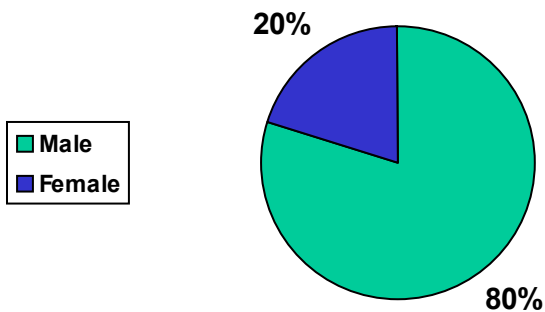
Activity Code	Facility Name	Facility ID	Net Expense to SCA	# of Clients Placed	# of Units	
Outpatient Drug Free #86A1	Naaman Center- Elizabethtown	227061	\$35,560	130	1,031	
	H.S.A. Lancaster	367021	\$127,988	738	3,542	
	Lancaster Clinical	367026	\$20,787	116	435.5	
	Family Services of Central PA	367033	\$2,010	13	44	
	Lancaster Freedom Center	367043	\$45,464	251	1,035	
	Nuestra Clinica	367057	\$12,151	70	356.5	
	Mission New Life Methodist	367080	\$5,898	26	177	
	Mission New Life Lutheran	367079	\$26,285	92	624	
	Gaudenzia - Elsie Shenk	367081	\$23,513	38	280	
	Ponessa and Associates	367067	\$39,341	165	791	
	PA Counseling of Lancaster	367070	\$30,698	196	854	
	H.S.A. - Ephrata	367073	\$58,248	228	1,717.3	
	DHHS	N00276	\$4,064	1	0	
	Outpatient Drug Free Total			\$432,007	1,902	10,887.3
	Methadone Maintenance #86A2	Addiction Recovery Systems	367082	\$32,177	16	3,801
Advanced Tx Systems		157048	\$9,830	9	1,110	
Discovery House		227069	\$676	1	57	
Advanced Tx Systems (Lebanon)		387021	\$256	1	26	
Methadone Maint. Total			\$42,939	21	4,994	
Intensive Outpatient #86B	Naaman Center	227061	\$1,940	9	61	
	H.S.A. - Lancaster	367021	\$28,483	58	1,161.5	
	Lancaster Freedom Center	367043	\$20,446	61	1,178.5	
	Ponessa and Associates	367067	\$30	1	1	
	PA Counseling	367070	\$6,268	24	387	
	Nuestra Clinica	367057	\$679	2	27.5	
	Gaudenzia, Elsie Shenk	367081	\$617	3	20	
	H.S.A. - Ephrata	367073	\$1,639	7	45	
	IOP Total			\$60,102	163	2,881.5
Case Management #88A	Case Management Unit	326000	\$202,663			

The People We Serve

Substance Abuse Treatment

The Lancaster County D&A Commission provides treatment funding for clients who have no other means of paying for their treatment. We serve Lancaster County residents who do not qualify for Veteran's benefits, Medical Assistance, or employer-sponsored group health plans. They have little or no means to purchase private insurance or pay for their own treatment.

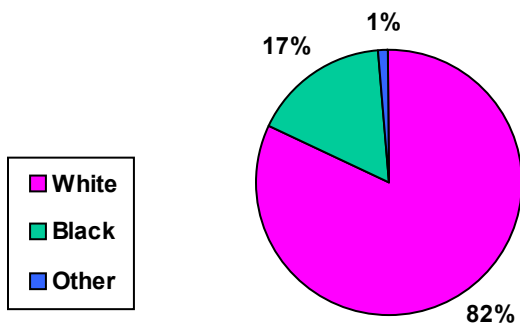
Sex of Client



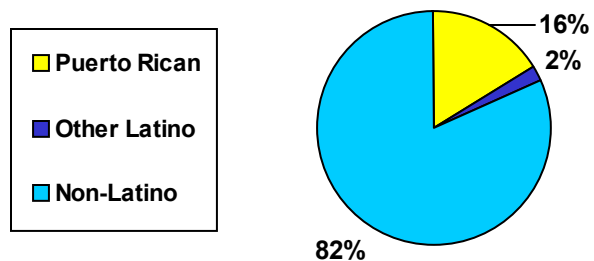
The Lancaster County Drug and Alcohol Commission strives to decrease barriers for individuals entering treatment. It is difficult for people to admit that their lives are out of control, and barriers would only provide an excuse not to seek recovery.

The Commission allows clients direct access into treatment through outpatient service providers. The D&A Commission contracts with culturally and ethnically specific programs, and programs that offer outreach to women. Pregnant women are given priority admission and funding to help insure the health and safety of the unborn child.

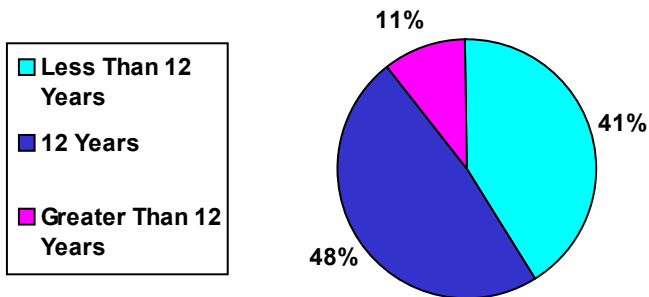
Race of Client



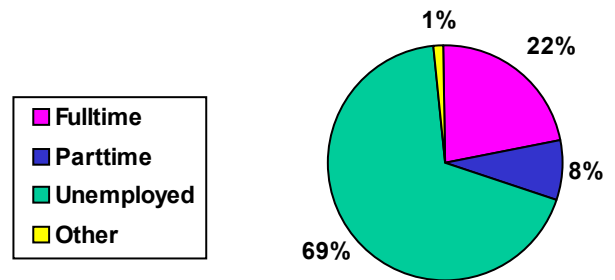
Ethnicity of Client



Education of Client



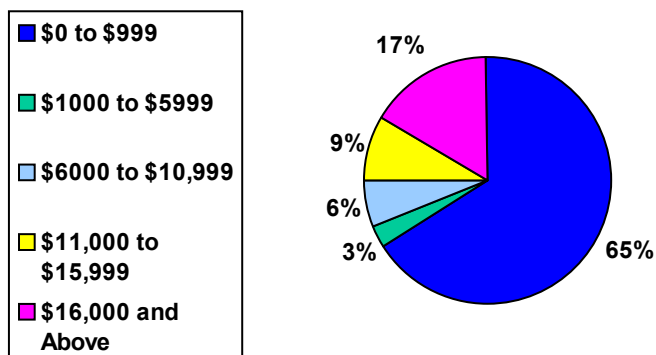
Employment Status



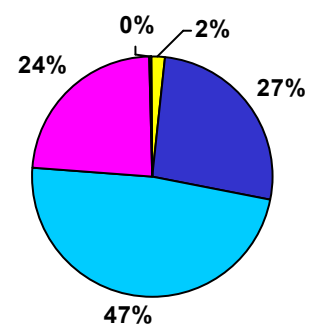
The main goal for all the D&A Commission's clients is to become sober and drug free. Often, this cannot be accomplished without addressing other aspects of the person's life. Less than 11% of Lancaster SCA clients have any education beyond high school. Many do not even have a high school diploma. Yearly income for the majority of our clients is less than \$1000. Most are unemployed. About 1/3 of our adult clients live with their parents, and most are dependent on others for their support. Many have been in trouble with the law. Some are homeless.

The Lancaster County D&A Commission contracts with services that help addicted persons become independent, self-supporting, productive members of society. Treatment may include referral for job training, educational programs, and life skills training. Intensive case management services help assist clients with multiple needs, by helping them find resources, such as housing assistance, medical testing and treatment, and transportation.

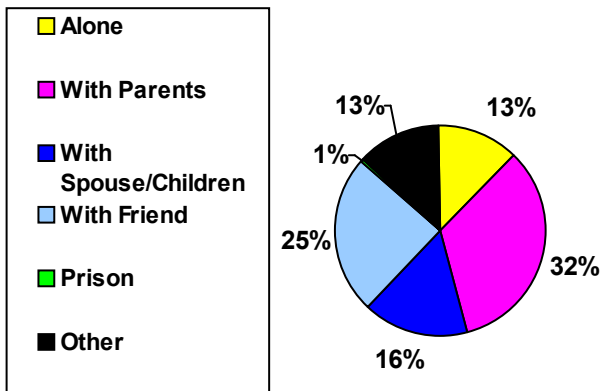
Yearly Income



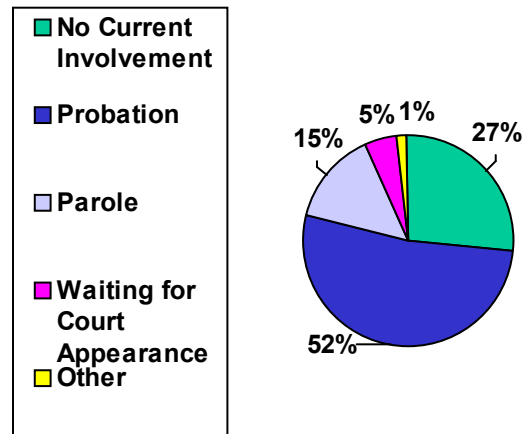
Age of Client



Living Arrangement



Legal Status of Client



More than 70% of Lancaster County's D&A clients have experienced trouble with the law. Over 2/3 are currently on probation or parole. The Lancaster County Court of Common Pleas has instituted a voluntary Adult Drug Court based on proven national research and program models. This provides participants an opportunity to pursue treatment for their addiction(s), while productively addressing legal problems. This cost efficient means of engaging addicts who have committed criminal offenses in treatment also improves public safety.

Primary Substance of Abuse

Primary Substance of Abuse	% of Admissions	Primary Substance of Abuse	% of Admissions
Alcohol	41.57	Marijuana/Hashish	16.23
Heroin	21.22	Other Opiates/Synthetics	2.32
Cocaine/Crack	17.31	All other substances	1.35

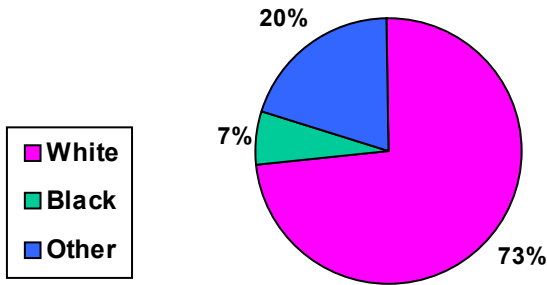
Alcohol is the substance most often indicated as primary drug of choice for Lancaster County clients, followed by heroin. A much smaller percentage indicate cocaine or marijuana as their primary drug. The number of clients indicating other opiates (such as Oxycontin or other prescription pain medicines) is small, but has increased over the past three years.

Based on admission forms submitted by drug and alcohol service providers between July 1, 2006 and June 30, 2007. Data includes duplicate count of client admissions.

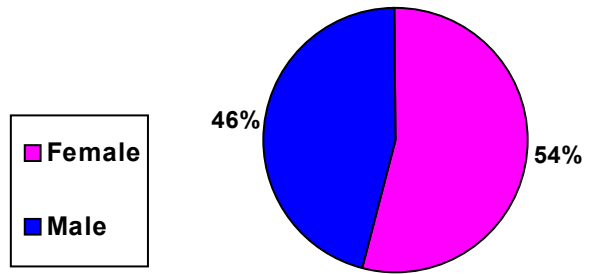
Prevention Services

The goal of prevention is to deter the onset of drug abuse and other related problems before they start. Unlike treatment services, county-funded prevention services are offered widely throughout the general population, without regard to income level. In some programs, the goal is to reach as many individuals as possible, in order to raise awareness and inform the general public. In other programs, specific at-risk groups are targeted. The recipients of prevention services are often children, or those who influence them, such as parents and caretakers. About 76% of prevention program participants are between the ages of six and 14.

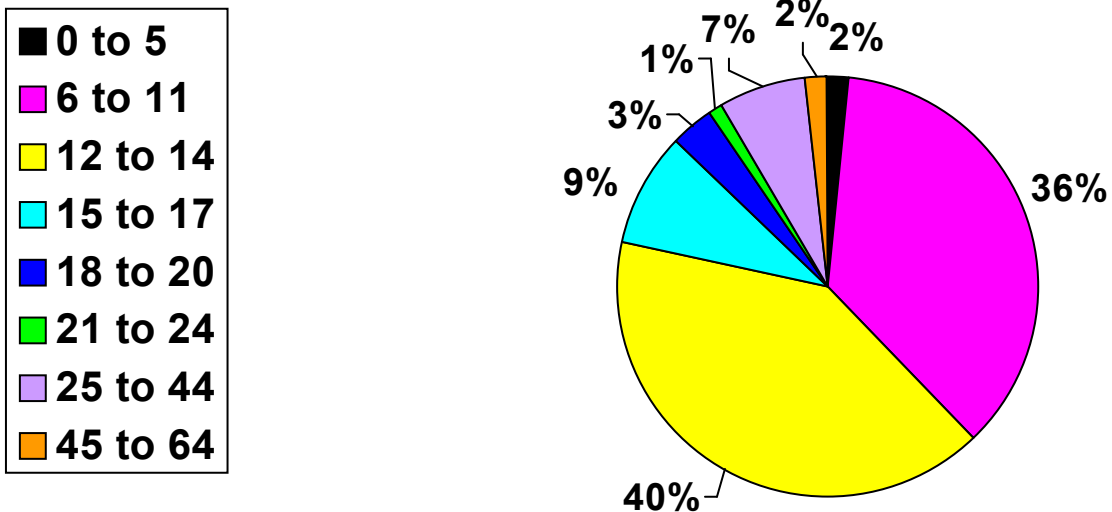
**Race of Participants
(all programs)**



**Sex of Participants
(all programs)**



Age of Participants (all programs)



We Make a Difference: Our Impact on the Community

Treatment Outcomes

Halfway House Gatehouse

Gatehouse is a halfway house for recovering men and women who are making the transition back to society. They provide structured living and on-going treatment for adult men and women recovering from chemical dependency. Many Gatehouse residents have already completed other forms of treatment, such as detox or an inpatient residential rehab program.



Gatehouse conducts telephone follow-ups to all men and women who complete the program. Residents are contacted 90 days after discharge. Results are as follows:

Abstinence: 67% of men and 92% of women were still abstinent 90 days after treatment.

Employment: For men the employment rate was 74%, for women it was 90%.

Legal Status: A majority of Gatehouse residents had some trouble with the law upon admission. At the 90 day follow-up, 94% of men had no new charges. No new charges had been brought against any women. Most were in compliance with the terms of their probation.

Drug Court

In January 2005, the Lancaster County Court of Common Pleas instituted an Adult Drug Court based on proven national research and program models. The goal was to address an ongoing problem: How can drug addicted offenders receive treatment for their addictions, but still be held accountable for their crimes?



Drug Court participants must be Lancaster County residents, 18 or older, have a non-violent criminal history, and a history of substance abuse. Each participant must successfully complete a four-phase, recovery-oriented program that lasts 12 months. The program includes active participation in a treatment program, AA/NA meetings, community service, employment and training, and education. Frequent court appearances, probation visits, and urine tests are also required to maintain accountability. Participants who successfully complete all four phases may apply for graduation. They may also receive dismissal, reduction, or expungement of their charges.

Comprehensive Tobacco Control Program Outcomes



In 2003, the Lancaster County Drug and Alcohol Commission became the Primary Contractor for tobacco prevention and cessation Tobacco Master Settlement Act (MSA) dollars for the county. Managing a budget of over \$1 million per year, the Commission worked closely with the Tobacco-Free Coalition of Lancaster County, a grassroots group committed to reducing the burden of tobacco use. This contract continued through the 2006-2007 fiscal year.

During FY 2006-2007, the Drug and Alcohol Commission contracted with 15 local agencies and hospitals and 12 police departments to provide comprehensive services to the county.

Preventing young people from using tobacco:

- } Police completed 408 underage compliance checks in Lancaster County stores, using local youth volunteers in 2006-2007. Eleven merchants were cited for illegal sales to minors.
- } During the 2006-2007 school year, 9,985 students in kindergarten through 12th grade attended evidence-based tobacco prevention programs in their schools.
- } Additionally, 3,590 students attended special anti-smoking programs presented by the American Lung Association, Red Rose Nu-Voice Club, Project Breathe, and Deaf and Hard of Hearing Services of Lancaster County.

Helping people quit smoking:

- } Between July 1, 2006 and June 30, 2007, 239 adults and 28 youth enrolled in community-based smoking cessation programs in Lancaster County. One hundred sixty reported being smoke-free upon completion.
- } Three local hospitals have established inpatient intervention programs for patients who smoke. Through this effort, 2,236 patients received bedside visits from a smoking cessation counselor.
- } Cessation classes for Spanish-speaking persons were provided by Mission New Life. Outreach efforts targeted businesses with large numbers of Spanish-speaking employees and public housing sites.

Reducing tobacco smoke pollution:

- } During 2006-2007, the Tobacco Free Coalition of Lancaster County distributed 6,100 smoke-free dining guides to Lancaster County residents and visitors.
- } Fifteen new smoke-free restaurants were identified, bringing the total to 342.
- } The Tobacco Free Coalition conducted 16 meetings to educate state legislators about tobacco education and cessation issues in Lancaster County.



PREVENTION OUTCOMES

Elementary Youth Support Program Council on Drug & Alcohol Abuse

Elementary Youth Support Program (EYSP) is a small group, in school, early intervention/prevention program designed to identify and assist children who are at risk for future health damaging behaviors. The program uses hands-on interactive learning experiences that build skills and enhance resiliency for students in elementary school.



During the 2006-2007 school year, the EYSP program served 796 children in 13 school districts. According to the teacher and student assessments, students showed the following improvements:

COPING SKILLS AND BEHAVIOR

- £ 58% improvement in the ability to accept mistakes without getting upset;
- £ 66% improvement in the ability to control their temper;
- £ 55% improvement in the ability to avoid conflicts;
- £ 51% improvement in the ability to cope well under stress;
- £ 54% improvement in the ability to say 'No' when pressured to do something harmful;
- £ 54% improvement in the ability to express their feelings appropriately;
- £ 34% improvement in cooperative behavior;
- £ 43% improvement in assertive behavior;
- £ 36% improvement in self-control;
- £ 25% improvement in demonstrating a decrease in externalizing behavior problems.

PEER RELATIONSHIPS AND DECISION-MAKING

- £ 54% improvement in the ability to model positive friendship skills;
- £ 56% improvement in the ability to maintain positive peer relationships;
- £ 54% improvement in the ability to show consideration for others and their feelings;
- £ 49% improvement in the ability to use good decision-making skills;
- £ 57% improvement in the ability to stay out of trouble;
- £ 62% improvement in the ability to make safe decisions to avoid harmful consequences;
- £ 50% improvement in the ability to respond appropriately to peer pressure;
- £ 53% improvement in the ability to take responsibility for their own actions;

SCHOOL PERFORMANCE

- £ 58% improvement in the ability to complete work in a timely manner;
- £ 68% improvement in the ability to participate in classroom activities;
- £ 64% improvement in the ability to follow classroom guidelines/rules;
- £ 33% improvement in demonstrating a feeling of security and being cared for in school;
- £ 62% improvement in the ability to see self as capable and understand their own abilities;



Council on Drug and Alcohol Abuse Lancaster Drug and Alcohol Information Center

The **mission** of the Information Center is to serve as the “one-stop shop” for information on alcohol, tobacco and other drugs (ATOD). The Information Center disseminates information on prevention and treatment.

The Information Center’s **services** include:

- Training: Conferences/workshops relating to ATOD prevention.
- Lending Library: A lending library of videos and printed material.
- Information Clearinghouse: A wide variety of brochures, posters, and other materials for distribution.
- Website: An informational website (www.dainfo.org).
- Information & Referral: An information and referral service for

individuals/families/organizations looking for treatment and support for ATOD abuse and addiction. ATOD information is also available to the general public.

- Outreach: A comprehensive outreach program.
- Technical Assistance: Short-term consultation with prevention providers, faith-based organizations, businesses and others.
- Research: Gather, analyze, and disseminate data related to substance abuse.

Service Recipients by Type of Service

	2005-2006	2006-2007
Information & Referral Contacts	796	1,009
Publications Distributed	29,815	18,721
Website (visitors)	46,428	114,029

Client Type

Client Type	Number	Percentage
Parent	228	22.6
Person Using Substances	188	18.6
Drug and Alcohol Professional	141	14.0
Mental Health Professional	76	7.5
Community Service Organization	93	9.2
Teacher/Educator	52	5.1
Relative	63	6.2
Friend	43	4.3
Employer/EAP	10	1.0
Spouse	38	3.8
College/University	24	2.4
Clergy/Faith-Based	21	2.1
Criminal Justice Professional	8	0.8
Medical Professional	20	2.0
Other	15	1.5

Website Activity

	2005-2006	2006-2007
Website Hits	344,760	473,128
Website Visits	46,428	114,065
Downloads (PDF Format Files)	12,300	16,319

**Want more information
on how to help
youth and adults
live a drug free life?**

www.dainfo.org



This publication is made possible by a contract with the Lancaster County Drug and Alcohol Commission, Department of Health, Bureau of Drug and Alcohol Programs, Commonwealth of Pennsylvania. This County Office and Department of Health specifically disclaim responsibility for any analysis, interpretations, or conclusion herein.

