

How to Use the eScan for Paper Ballots

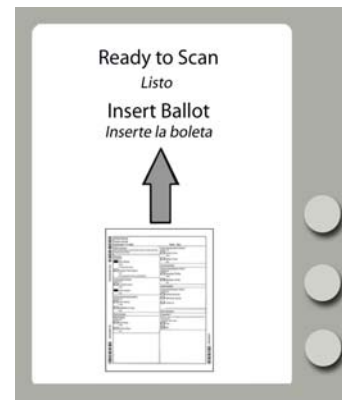
The eScan is a digital scanner that reads paper ballots.



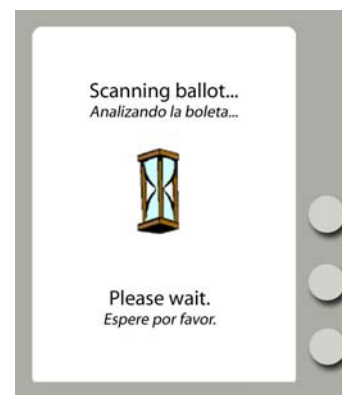
1. When you have finished marking your paper ballot, take it to the eScan machine at your polling place and insert it into the ballot feed slot.



2. The eScan displays **Ready to Scan** when the machine is available for the next ballot.



3. Wait while the **Scanning Ballot...** message is displayed.



4. Respond to any Voter Instruction messages.
 - ▶ If the ballot is *properly marked*, eScan accepts the ballot and displays the waving American flag to indicate that the ballot has been recorded.

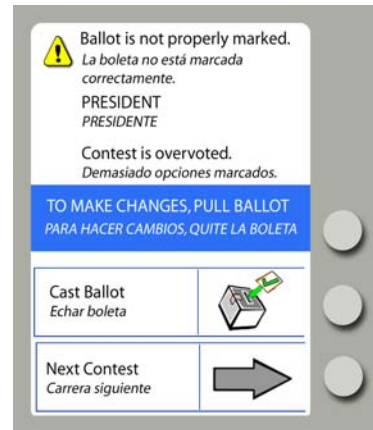


How to Use the eScan for Paper Ballots (continued)

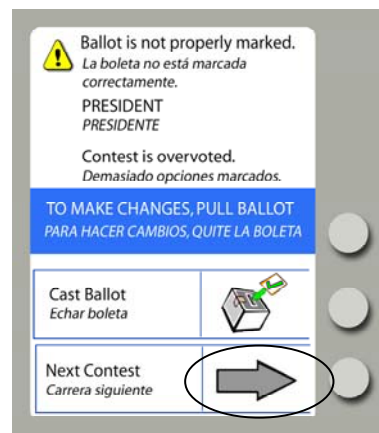
4. Respond to any Voter Instruction messages.
 - ▶ If the ballot is *properly marked*, eScan accepts the ballot and displays the waving American flag to indicate that the ballot has been recorded.



5. Respond to any Voter Instruction messages (continued).
 - ▶ If the ballot has *improperly marked*, contests, information screens appears for each contest that requires attention.



6. To see information about the next contest not properly marked, you may select **Next Contest**.



TO MAKE CORRECTIONS

- ▶ **Overvotes:** too many options marked
Pull the ballot and ask the poll worker for a new one. The old one will be destroyed.
- ▶ **Undervotes:** too few or no marks on a contest
Pull the ballot and mark the undervoted contests, if desired. Then rescan.
- ▶ **Blank ballot:** no options are marked on the entire ballot
Pull the ballot and mark any contests desired. Then rescan.

7. If you want to cast ballot as-is, you will have one of two options shown on the screen.

- ▶ You may have the option to select **Cast Ballot** to cast the ballot as-is, without poll worker assistance. **Selecting Cast Ballot drops the ballot into the ballot box and records the vote as-is!**

or

- ▶ You may have to contact a poll worker for assistance to cast the ballot as-is.

